

TECHNICAL MANUAL

**UNIT, DIRECT SUPPORT AND  
GENERAL SUPPORT MAINTENANCE  
REPAIR PARTS  
AND SPECIAL TOOLS LIST**

**FOR**

**REFRIGERATION UNIT, MECHANICAL,  
10K BTU, ELECTRIC  
MODEL F1000RE**

**NSN 4110-01-389-9182**

DISTRIBUTION STATEMENT A: Approved for public release; distribution is unlimited

---

**HEADQUARTERS, DEPARTMENT OF THE ARMY  
9 FEBRUARY 1996**

TECHNICAL MANUAL

**Unit, Direct Support, and  
General Support Maintenance  
Repair Parts and Special Tools List  
for  
REFRIGERATION UNIT, MECHANICAL,  
10K BTU, ELECTRIC  
MODEL F1000RE**

NSN 4110-01-389-9182

**REPORTING ERRORS AND RECOMMENDING IMPROVEMENTS**

You can help improve this manual. If you find any mistakes or if you know of a way to improve these procedures, please let us know. Mail your letter or DA Form 2028 (Recommended Changes to Publications and Blank Forms), or DA Form 2028-2 located in the back of this manual direct to: Commander, U.S. Army Aviation and Troop Command, ATTN: AMSAT-I-MP, 4300 Goodfellow Blvd., St. Louis, MO 63120-1798. You may also submit your recommended changes by E-mail directly to <daf2028@st-louis-emh7.army.mil>. A reply will be furnished directly to you. Instructions for sending an electronic 2028 may be found at the back of this manual immediately preceding the hard copy 2028.

DISTRIBUTION STATEMENT A: Approved for public release; distribution is unlimited.

**TABLE OF CONTENTS**

		Page	Illus/ Figure
Section	I INTRODUCTION.....	1	
Section	II REPAIR PARTS LIST .....	1-1	
Group	01 Cabinet, Panels, Doors, and Screens Panels, Doors, and Screens.....	1-1	1
Group	02 Electrical and Control Control Box.....	2-1	2
	Control Box Wires and Cables .....	3-1	3
	Control Box.....	4-1	4
	Defrost Temperature Switch, Door Switches, and Electrical Enclosure Assembly.....	5-1	5
Group	03 Power Transmission/Air Handling Power Transmission and Air Handling .....	6-1	6

TABLE OF CONTENTS - Continued

		Page	Illus/ Figure
Group 04	Refrigeration System		
	Refrigeration Piping, Condenser Section.....	7-1	7
	Refrigeration Piping, Evaporator Section .....	8-1	8
	Pressure Switches .....	9-1	9
	Compressor.....	10-1	10
Group 05	Housing		
	Heat Shield, Evaporator Housing, and Condenser Frame.....	11-1	11
Group 06	Bulk Material		
	Bulk.....	BULK-1	
Section III	SPECIAL TOOLS LIST		
Group 07	Special Tools		
	Special Tools .....	12-1	12
Section IV	CROSS REFERENCE INDEXES		
	National Stock Number Index .....		
	Part Number Index.....		
	Figure and Item Number Index.....		

# UNIT, DIRECT SUPPORT, AND GENERAL SUPPORT MAINTENANCE REPAIR PARTS AND SPECIAL TOOLS LIST

## Section I INTRODUCTION

**1. SCOPE.** This RPSTL lists and authorizes spares and repair parts; special tools; special test, measurement, and diagnostic equipment (TMDE); and other special support equipment required for performance of unit, direct support, and general support maintenance of the Refrigeration Unit. It authorizes the requisitioning, issue, and disposition of spares, repair parts and special tools as indicated by the source, maintenance, and recoverability (SMR) codes.

**2. GENERAL.** In addition to Section I, Introduction, this Repair Parts and Special Tools List is divided into the following sections:

a. **Section II. Repair Parts List.** A list of spares and repair parts authorized by this RPSTL for use in the performance of maintenance. The list also includes parts which must be removed for replacement of the authorized parts. Parts lists are composed of functional groups in ascending alphanumeric sequence, with the parts in each group listed in ascending figure and item number sequence. Bulk materials are listed in item name sequence. Repair parts kits are listed separately in their own functional group within Section II. Repair parts for repairable special tools are also listed in this section. Items listed are shown on the associated illustration(s)/ figure(s).

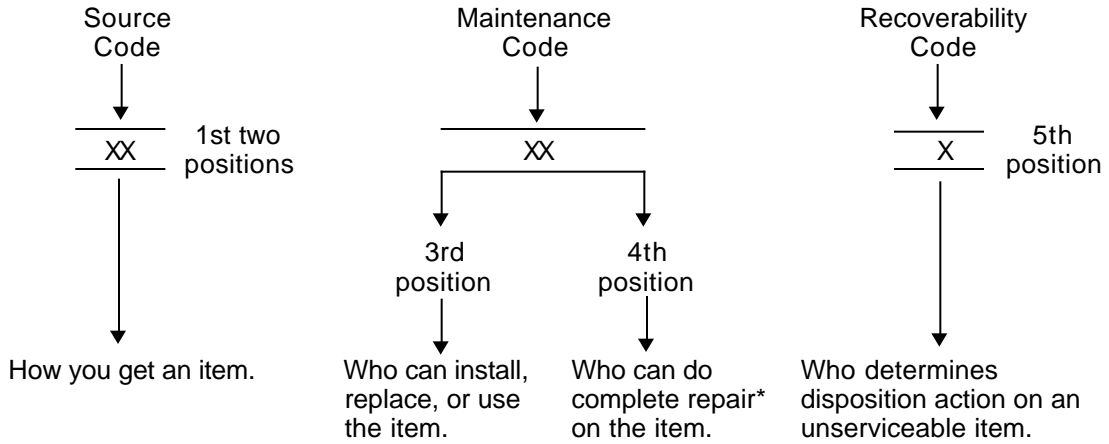
b. **Section III. Special Tools List.** A list of special tools, special TMDE, and other special support equipment authorized by this RPSTL (as indicated by Basis of Issue (BOI) information in DESCRIPTION AND USABLE ON CODE column) for the performance of maintenance.

c. **Section IV. Cross Reference Indexes.** A list, in National Item Identification Number (NIIN) sequence, of all National Stock Number (NSN) items appearing in the listing, followed by a list in alphanumeric sequence of all part numbers appearing in the listings. National stock numbers and part numbers are cross-referenced to each illustration figure and item number appearance. The figure and item number index lists figure and item numbers in alphanumeric sequence and cross-references NSN, CAGEC, and part numbers.

3. EXPLANATION OF COLUMNS (Sections II and III).

a. **Item No., Column (1).** Indicates the number used to identify items called out in the illustration.

b. **SMR Code, Column (2).** The Source, Maintenance, and Recoverability (SMR) code is a five position code containing supply/requisitioning information, maintenance category authorization criteria, and disposition instructions, as shown in the following breakout.



\* Complete Repair: Maintenance capacity, capability, and authority to perform all the corrective maintenance tasks of the "Repair" function in a use/user environment in order to restore serviceability to a failed item.

(1) **Source Code.** The source code tells you how you get an item needed for maintenance, repair, or overhaul of an end item/equipment. Explanations of source codes follow.

Code	Explanation
PA	Stocked items; use the applicable NSN to request/requisition items with these source codes. They are authorized to the category indicated by the code entered in the 3rd position of the SMR code.  **NOTE : Items coded PC are subject to deterioration.
PB	
PC**	
PD	
PE	
PF	
PG	
KD	Items with these codes are not to be requested/requisitioned individually. They are part of a kit which is authorized to the maintenance category indicated in the 3rd position of the SMR code. The complete kit must be requisitioned and applied.
KF	
KB	

**TM 9-4110-256-24P**

Code	Explanation
MO - (Made at Unit AVUM level)	Items with these codes are not to be requested/requisitioned individually. They must be made from bulk material which is identified by the part number in the DESCRIPTION and USABLE ON CODE (UOC) column and listed in the Bulk Material group of the repair parts list in the RPSTL. If the item is authorized to you by the 3rd position code of the SMR code, but the source code indicates it is made at a higher level, order the item from the higher level of maintenance.
MF - (Made at DS/AVUM level)	
MH - (Made at GS level)	
ML - (Made at Specialized Repair Activity (SRA))	
MD - (Made at Depot)	
AO - (Assembled by Unit AVUM Level)	Items with these codes are not to be requested/requisitioned individually. The parts that make up the assembled item must be requisitioned or fabricated and assembled at the level of maintenance indicated by the source code. If the 3rd position code of the SMR code, authorizes you to replace the item, but the source code indicates the items are assembled at a higher level, order the item from the higher level of maintenance.
AF - (Assembled by DS/AVUM Level)	
AH - (Assembled by GS Category)	
AL - (Assembled by SRA)	
AD - (Assembled by Depot)	

Code            Explanation

XA -- Do not requisition an "XA"-coded item. Order its next higher assembly. (Also, refer to the NOTE below.)

XB -- If an "XB" item is not available from salvage, order it using the CAGE Code and part number given.

XC -- Installation drawing, diagram, instruction sheet, field service drawing, that is identified by manufacturer's part number.

XD -- Item is not stocked. Order an "XD"-coded item through normal supply channels using the CAGE Code and part number given, if no NSN is available.

**NOTE**

Cannibalization or controlled exchange, when authorized, may be used as a source of supply for items with the above source codes, except for those source coded "XA" or those aircraft support items restricted by requirements of AR 750-1.

(2) **Maintenance Code.** Maintenance codes tell you the level(s) of maintenance authorized to USE and REPAIR support items. The maintenance codes are entered in the third and fourth positions of the SMR code as follows:

(a) The maintenance code entered in the third position tells you the lowest maintenance level authorized to remove, replace, and use an item. The maintenance code entered in the third position will indicate authorization to one of the following levels of maintenance.

Code	Application/Explanation
------	-------------------------

C - Crew or operator maintenance done within unit/AVUM maintenance.

O - Unit level/AVUM maintenance can remove, replace, and use the item.

F - Direct support/AVUM maintenance can remove, replace, and use the item.

H - General support maintenance can remove, replace, and use the item.

L - Specialized repair activity can remove, replace, and use the item.

D - Depot category can remove, replace, and use the item.

(b) The maintenance code entered in the fourth position tells you whether or not the item is to be repaired and identifies the lowest maintenance level with the capability to do complete repair (i.e., perform all authorized repair functions). (NOTE: Some limited repair may be done on the item at a lower level of maintenance, if authorized by the Maintenance Allocation Chart (MAC) and SMR codes.) This position will contain one of the following codes.

Code	Application/Explanation
------	-------------------------

O - Unit/AVUM is the lowest level that can do complete repair of the item.

F - Direct support/AVUM is the lowest level that can do complete repair of the item.

H - General support is the lowest level that can do complete repair of the item.

L - Repair restricted to designated specialized repair activity.

D - Depot is the lowest level that can do complete repair of the item.

Z - Non repairable. No repair is authorized.

B - No repair is authorized. No parts or special tools are authorized for the maintenance of a "B" coded item. However, the item may be reconditioned by adjusting, lubricating, etc., at the user level.

(3) **Recoverability Code.** Recoverability codes are assigned to items to indicate the disposition action on unserviceable items. The recoverability code is entered in the fifth position of the SMR Code as follows:

Recoverability Codes	Definition
----------------------	------------

Z - Non repairable item. When unserviceable, condemn and dispose of the item at the level of maintenance shown in third position of SMR Code.

O - Repairable item. When uneconomically repairable, condemn and dispose of the item at unit or AVUM level.

F - Repairable item. When uneconomically repairable, condemn and dispose of the item at the direct support or AVUM level.

H - Repairable item. When uneconomically repairable, condemn and dispose of the item at the general support level.

D - Repairable item. When beyond lower level repair capability, return to depot. Condemnation and disposal of item not authorized below depot level.

L - Repairable item. Condemnation and disposal not authorized below specialized repair activity.

A - Item requires special handling or condemnation procedures because of specific reasons (i.e., precious metal content, high dollar value, critical material, or hazardous material). Refer to appropriate manuals/directives for specific instructions.

c. **CAGEC, Column (3).** The Commercial And Government Entity Code (CAGEC) is a 5-digit numeric code which is used to identify the manufacturer, distributor, or Government agency, etc., that supplies the item.

d. **Part Number, Column (4).** Indicates the primary number used by the manufacturer (individual, company, firm, corporation, or Government activity), which controls the design and characteristics of the item by means of its engineering drawings, specifications, standards, and inspection requirements to identify an item or range of items.

**NOTE**

When you use an NSN to requisition an item, the item you receive may have a different part number from the part ordered, but go ahead and use it or furnish it as the replacement part.



e. **Description and Usable On Code (UOC), Column (5).** This column includes the following information:

- (1) The Federal item name and, when required, a minimum description to identify the item.
- (2) Items that are included in kits and sets are listed below the name of the kit or set.
- (3) Spare/repair parts that make up an assembled item are listed immediately following the assembled item line entry.
- (4) Part numbers for bulk material are referenced in the description column in the line item entry for the item to be manufactured/fabricated.
- (5) When the item is not used with all serial numbers of the same model, the effective serial numbers are shown as the last line of the description (before UOC).
- (6) The Usable On Code, when applicable (see paragraph 5, Special Information).
- (7) In the Special Tools List section, the Basis Of Issue (BOI) appears as the last line(s) in the entry for each special tool, special TMDE, and other special support equipment. When density of equipment supported exceeds density spread indicated in the basis of issue, the total authorization is increased proportionately.
- (8) The statement "END OF FIGURE" appears just below the last item description in column five for a given figure in both Sections II and III.

f. **QTY, Column (6).** The QTY (quantity per figure column) indicates the quantity of the item used in the breakout shown on the figure, which is prepared for a functional group, sub functional group, or an assembly. A "V" appearing in this column in lieu of a quantity indicates that the quantity is variable and the quantity may vary from application to application.

#### 4. EXPLANATION OF COLUMNS (SECTION IV).

##### a. National Stock Number (NSN) Index.

(1) **Stock Number Column.** This column lists the NSN by National Item Identification Number (NIIN) sequence. The NIIN consists of the last nine digits of the NSN, i.e.,

\_\_\_\_\_NSN\_\_\_\_\_  
(5305-01-574-1467).  
NIIN

When using this column to locate an item, ignore the first four digits of the NSN. However, the complete NSN should be used when ordering items by stock number

(2) **FIG. Column.** This column lists the number of the figure where the item is identified/located. The figures are in numerical order in Section II and Section III.

(3) **ITEM Column.** The item number identifies the item associated with the figure listed in the adjacent FIG. column. This item is also identified by the NSN listed on the same line.

b. **Part Number Index.** Part numbers in this index are listed by part number in ascending alphanumeric sequence (i.e., vertical arrangement of letter and number combination which places the first letter or digit of each group in order A through Z, followed by the numbers 0 through 9 and each following letter or digit in like order).

(1) **CAGEC Column.** The Commercial And Government Entity Code (CAGEC) is a five digit numeric code used to identify the manufacturer, distributor, or Government agency, etc., that supplies the item.

(2) **Part Number Column.** Indicates the primary number used by the manufacturer (individual, firm, corporation, or Government activity), which controls the design and characteristics of the item by means of its engineering drawings, specifications standards, and inspection requirements to identify an item or range of items.

(3) **Stock Number Column.** This column lists the NSN for the associated part number and manufacturer identified in the PART NUMBER and CAGEC columns to the left.

(4) **Fig. Column.** This column lists the number of the figure where the item is identified/located in Sections II and III.

(5) **Item Column.** The item number is that number assigned to the item as it appears in the figure referenced in the adjacent figure number column.

c. **FIGURE AND ITEM NUMBER INDEX.**

(1) **Fig. Column.** This column lists the number of the figure where the item is identified/located in Sections II and III.

(2) **Item Column.** The item number is that number assigned to the item as it appears in the figure referenced in the adjacent figure number column.

(3) **Stock Number Column.** This column lists the NSN for the associated part number and manufacturer identified in the PART NUMBER and CAGEC columns to the left.

(4) **CAGEC Column.** The Commercial And Government Entity Code (CAGEC) is a five digit numeric code used to identify the manufacturer, distributor, or government agency, etc., that supplies the item.

(5) **Part Number Column.** Indicates the primary number used by the manufacturer (individual, firm, corporation, or Government activity), which controls the design and characteristics of the item by means of its engineering drawings, specifications standards, and inspection requirements to identify an item or range of items.

**5. SPECIAL INFORMATION.**

a. **USABLE ON CODE.** The Usable On Code appears in the lower left corner of the description column heading. Usable on codes are shown as "UOC: ..." in the Description Column (justified left) on the last or first line applicable item description/nomenclature. Uncoded items are applicable to all models.

b. **ASSOCIATED PUBLICATIONS.** The publications listed below pertain to the Refrigeration Unit and its components.

Publication	Short Title
TM 9-4110-256-14	Refrigeration Unit

**6. HOW TO LOCATE REPAIR PARTS**

a. **When National Stock Number or Part Number is NOT Known.**

(1) **First.** Using the table of contents, determine the assembly group or subassembly group to which the item belongs. This is necessary since figures are prepared for assembly groups and subassembly groups, and listings are divided into the same groups.

(2) **Second.** Find the figure covering the assembly group or subassembly group to which the item belongs.

(3) **Third.** Identify the item on the figure and use the Figure and Item Number Index to find the NSN.

b. **When National Stock Number or Part Number is Known:**

(1) **First.** Using the National Stock Number or the Part Number Index, find the pertinent National Stock Number or Part Number. The NSN index is in National Item Identification Number (NIIN) sequence, (see 4. a. (1)). The part numbers in the Part Number index are listed in ascending alphanumeric sequence, (see 4. b.). Both indexes cross-reference you to the illustration/figure and item number of the item you are looking for.

(2) **Second.** Turn to the figure and item number, verify that the item is the one you are looking for, then locate the item number in the repair parts list for the figure.

**7. ABBREVIATIONS.**

Abbreviations	Explanation
---------------	-------------

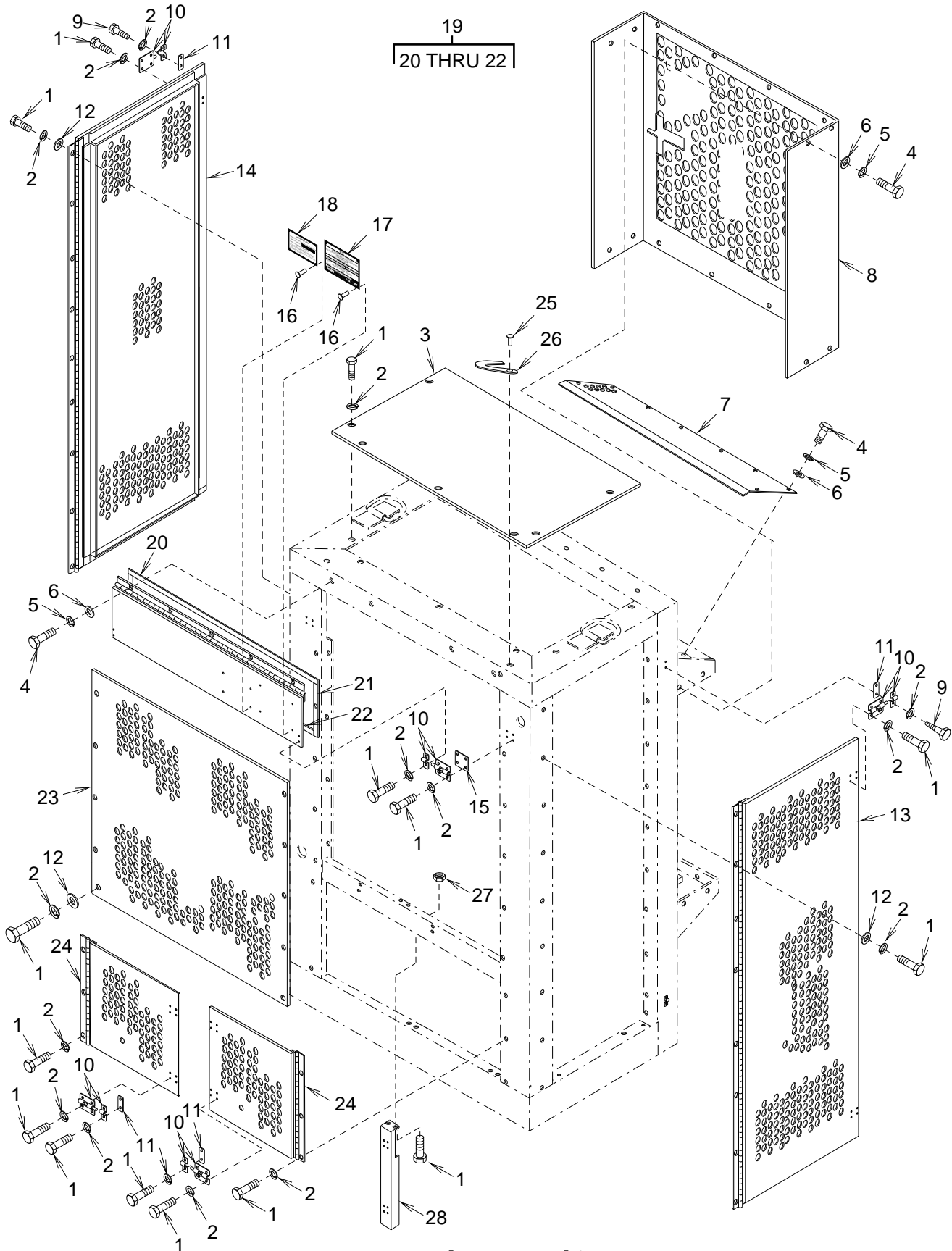


Figure 1. Panels, Doors, and Screens

GROUP 01 CABINET, PANELS, DOORS, AND SCREENS

FIGURE 01 PANELS, DOORS, AND SCREENS

PLSN No.	Fig No.	Item No.	SMR Code	CAGE Code	Part Number	Description and Usable On Codes (UOC)	Qty
	1	1	PAOZZ	94833	500K1928-21	BOLT,HEX HD	97
	1	2	PAOZZ	94833	500K1950-3	WASHER,LOCK	91
	1	3	XBOZZ	94833	150K0133	PANEL,TOP,CONDENSER	1
	1	4	PAOZZ	94833	500K1928-13	BOLT,HEX HD	28
	1	5	PAOZZ	94833	500K1950-2	WASHER,SPRING LOCK	28
	1	6	PAOZZ	94833	500K1926-2	WASHER,FLAT	28
	1	7	XBOZZ	94833	150K0154	GUARD,EVAPORATOR AIR OUTLET	1
	1	8	XBOZZ	94833	150K0036	GUARD,COIL	1
	1	9	PAOZZ	96906	MS51850-74	SCREW,TAPPING-THREAD FORMING,HEX HD	8
	1	10	PAOZZ	81348	A-A-466/TYI-2.5L-FZ	BOLT,BARREL	10
	1	11	XBOZZ	94833	150K0038	SHIM	8
	1	12	PAOZZ	94833	500K1926-3	WASHER,FLAT	28
	1	13	XBOZZ	94833	150K0136-1	DOOR,SIDE CONDENSER	1
	1	14	XBOZZ	94833	150K0136-2	DOOR,SIDE CONDENSER	1
	1	15	XBOZZ	94833	150K0207	SHIM	2
	1	16	XBOZZ	07707	AD42H	RIVET,BLIND	4
				97403	13214E3789-2		
	1	17	PAOZZ	94833	120K1489	PLATE,IDENTIFICATION	1
	1	18	XBOZZ	94833	120K1521	PLATE,WARRANTY	1
	1	19	XBOZZ	94833	150K0173-1	COVER,CONTROL PANEL	1
	1	20	MFFZZ	94833	150K0175-5	.GASKET,DOOR (1/8 X 27/32 X 34-3/4) MAKE FROM ASTM D1056-2A2C2F2	1
	1	21	MFFZZ	94833	150K0175-1	.GASKET,DOOR (3/16 X 7/8 X 8) MAKE FROM ASTM D1056-2A2C2F2	2
	1	22	MFFZZ	94833	150K0175-3	.GASKET,DOOR (3/16 X 7/8 X 32-11/16) MAKE FROM ASTM D1056-2A2C2F2	1
	1	23	XBOZZ	94833	150K0127-1	GUARD,CONDENSER	1
	1	24	XBOZZ	94833	150K0121-1	DOOR,FRONT BOTTOM	2
	1	25	PAOZZ	07707	AD44H	RIVET,BLIND	2
				97403	13214E3789-4		
	1	26	XBOZZ	94833	150K0180	CLIP,DOOR HOLDER	2
	1	27	PAOZZ	94833	500K1927-3	NUT,SELF LOCKING	4
	1	28	XBOZZ	94833	150K0092-1	POST,CENTER	1

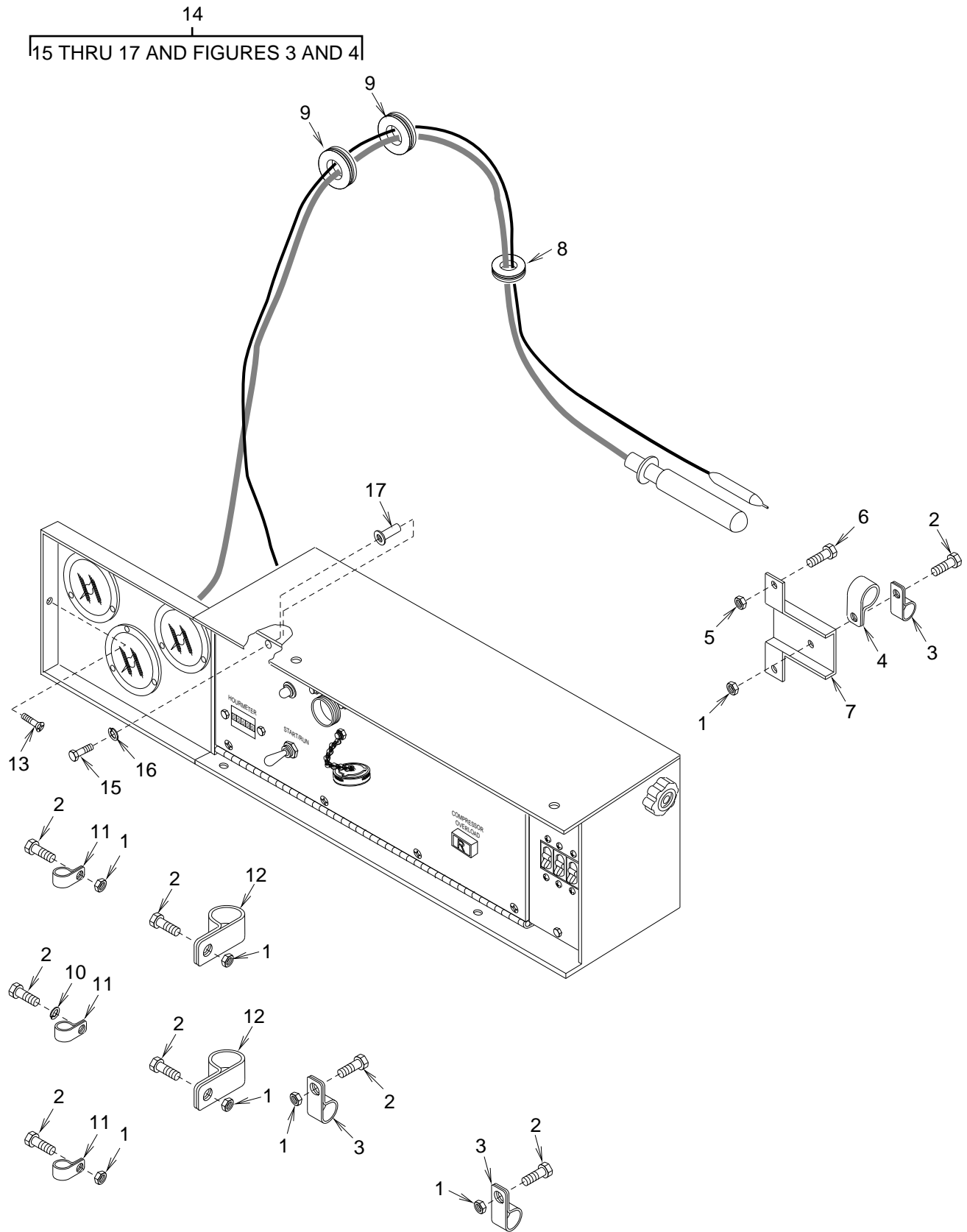


Figure 2. Control Box

GROUP 02 ELECTRICAL AND CONTROL

FIGURE 02 CONTROL BOX

PLSN No.	Fig No.	Item No.	SMR Code	CAGE Code	Part Number	Description and Usable On Codes (UOC)	Qty
	2	1	PAOZZ	94833	500K1927-3	NUT,SELF LOCKING	7
	2	2	PAOZZ	94833	500K1928-21	BOLT,HEX HD	8
	2	3	PAOZZ	96906	MS21919WCG-6	CLAMP,LOOP TYPE,CUSHIONED	3
	2	4	PAOZZ	96906	MS21919WCG-8	CLAMP,LOOP TYPE,CUSHIONED	1
	2	5	PAOZZ	78189	511-101800-00	NUT,SELF LOCKING,EXTERNAL TOOTH	2
				94833	52054-9		
	2	6	PAOZZ	94833	500K1928-19	BOLT,HEX HD	2
	2	7	XBOZZ	94833	150K0144-4	BRACKET,SENSING BULB	1
	2	8	PAOZZ	96906	MS35489-36	GROMMET,RUBBER	1
	2	9	PAOZZ	96906	MS35489-15	GROMMET,RUBBER	2
	2	10	PAOZZ	94833	500K1950-3	WASHER,SPRING LOCK	1
	2	11	PAOZZ	96906	MS21919WDG-4	CLAMP,LOOP TYPE,CUSHIONED	3
	2	12	PAOZZ	96906	MS21919WDG-17	CLAMP,LOOP TYPE,CUSHIONED	2
	2	13	PAOZZ	96906	MS24693-C72	SCREW,MACH CSKH	8
	2	14	XBOZZ	94833	151K0009-1	CONTROL BOX ASSEMBLY	1
	2	15	PAOZZ	94833	500K1928-19	.BOLT,HEX HD	2
	2	16	PAOZZ	94833	500K1950-3	.WASHER,SPRING LOCK	2
	2	17	PAOZZ	96906	MS27130-CR19K	.NUT,BLIND-FLAT HEAD	2

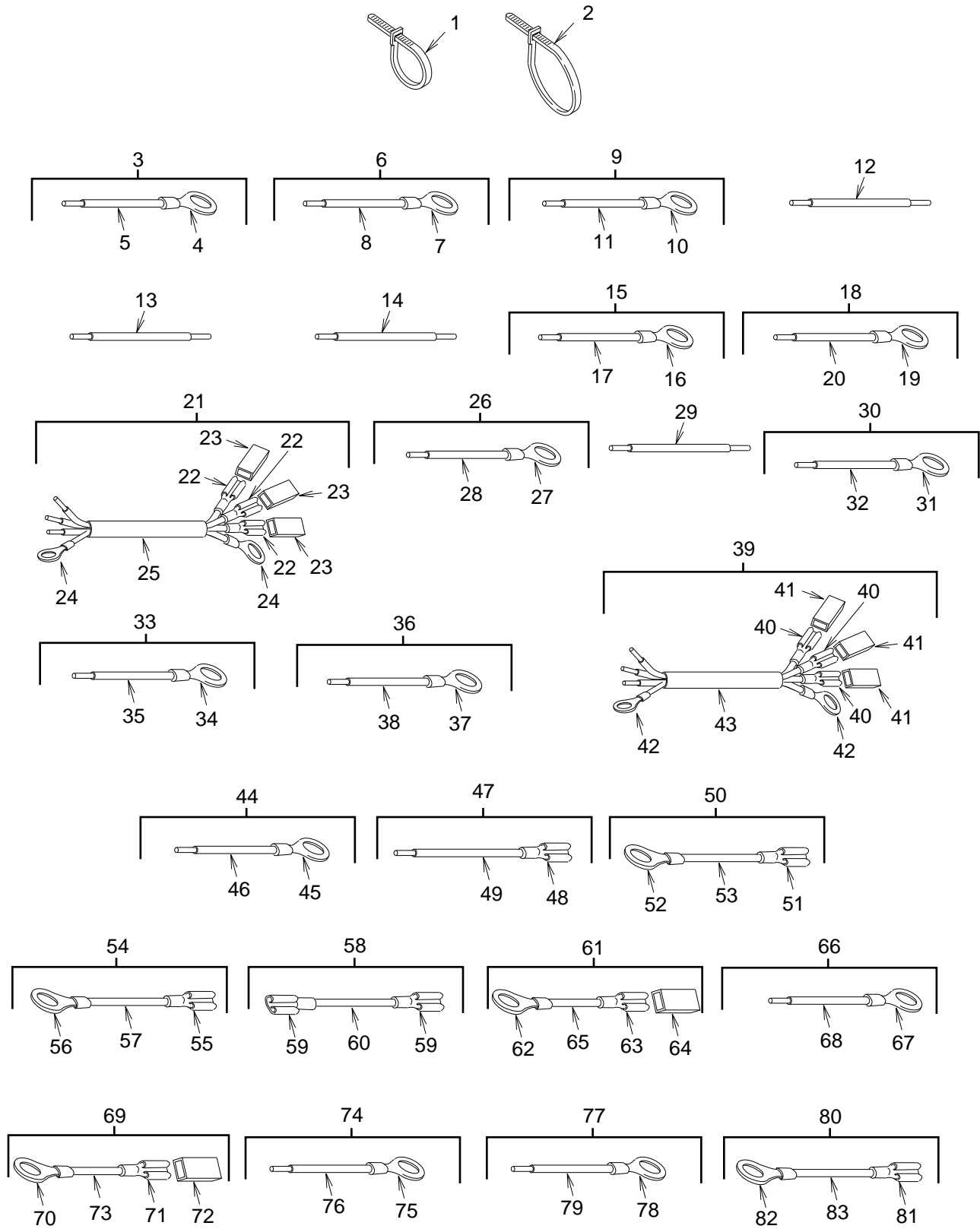


Figure 3. Control Box Wires and Cables (Sheet 1 of 2)



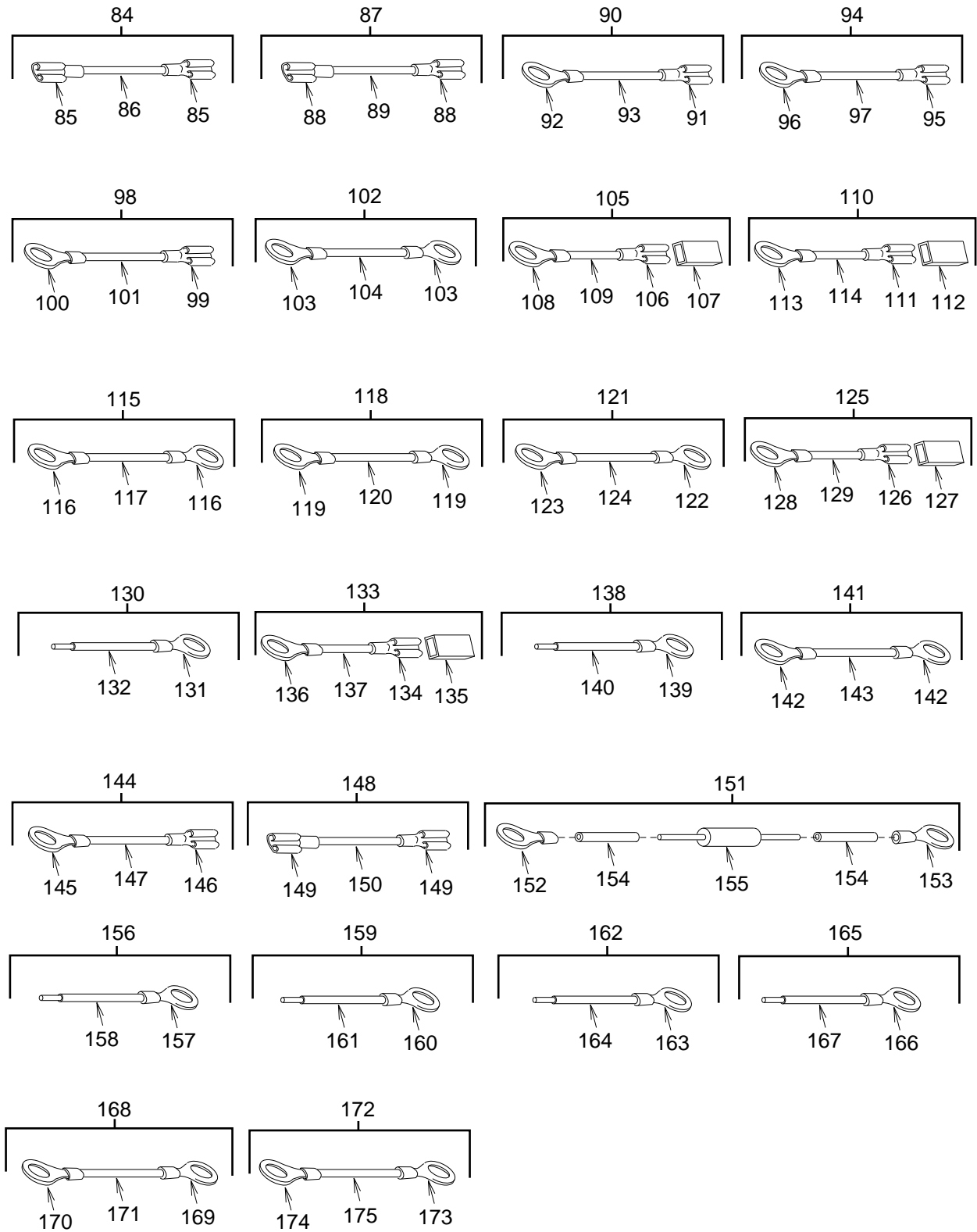


Figure 3. Control Box Wires and Cables (Sheet 2 of 2)

GROUP 02 ELECTRICAL AND CONTROL

FIGURE 03 CONTROL BOX WIRES AND CABLES

PLSN No.	Fig No.	Item No.	SMR Code	CAGE Code	Part Number	Description and Usable On Codes (UOC)	Qty
	3	1	PAOZZ	96906	MS3367-2-9	.STRAP,TIE DOWN	10
	3	2	PAOZZ	96906	MS3367-4-9	.STRAP,TIE DOWN	10
	3	3	XBOZZ	94833	151K0021-1	.WIRE LEAD	1
	3	4	PAOZZ	96906	MS25036-112	.. TERMINAL,LUG	1
	3	5	MOOZZ	94833	151K0021-1/1	.. WIRE,ELEC MAKE FROM M5086/2-12-9,24 IN.LG	1
	3	6	XBOZZ	94833	151K0021-2	.WIRE LEAD	1
	3	7	PAOZZ	96906	MS25036-112	.. TERMINAL,LUG	1
	3	8	MOOZZ	94833	151K0021-2/1	.. WIRE,ELEC MAKE FROM M5086/2-12-9,24 IN.LG	1
	3	9	XBOZZ	94833	151K0021-3	.WIRE LEAD	1
	3	10	PAOZZ	96906	MS25036-112	.. TERMINAL,LUG	1
	3	11	MOOZZ	94833	151K0021-3/1	.. WIRE,ELEC MAKE FROM M5086/2-12-9,24 IN.LG	1
	3	12	MOOZZ	94833	151K0021-4	.WIRE LEAD MAKE FROM M5086/2-14-9,12 IN.LG	1
	3	13	MOOZZ	94833	151K0021-5	.WIRE LEAD MAKE FROM M5086/2-14-9,12 IN.LG	1
	3	14	MOOZZ	94833	151K0021-6	.WIRE LEAD MAKE FROM M5086/2-14-9,12 IN.LG	1
	3	15	XBOZZ	94833	151K0021-7	.WIRE LEAD	1
	3	16	PAOZZ	96906	MS25036-153	.. TERMINAL,LUG	1
	3	17	MOOZZ	94833	151K0021-7/2	.. WIRE,ELEC MAKE FROM M5086/2-14-9,12 IN.LG	1
	3	18	XBOZZ	94833	151K0021-8	.WIRE LEAD	1
	3	19	PAOZZ	96906	MS25036-153	.. TERMINAL,LUG	1
	3	20	MOOZZ	94833	151K0021-8/2	.. WIRE,ELEC MAKE FROM M5086/2-14-9,12 IN.LG	1
	3	21	XBOZZ	94833	151K0021-10 TO 13	.CABLE	1
	3	22	PAOZZ	19200 00779	12712937-1 60414-1	.. RECEPTACLE,SINGLE CIRCUIT CONNECTOR	3
	3	23	PAOZZ	19200 00779	12712936 480054-3	.. HOUSING,RECEPTACLE	3
	3	24	PAOZZ	96906	MS25036-112	.. TERMINAL,LUG	2
	3	25	MOOZZ	94833	151K0021-10/13	.. CABLE MAKE FROM 500K1915-3,100 IN.LG	1
	3	26	XBOZZ	94833	151K0021-14	.WIRE LEAD	1
	3	27	PAOZZ	96906	MS25036-103	.. TERMINAL,LUG	1
	3	28	MOOZZ	94833	151K0021-14/3	.. WIRE,ELEC MAKE FROM M5086/2-18-9,30 IN.LG	1
	3	29	MOOZZ	94833	151K0021-15	.WIRE LEAD MAKE FROM M5086/2-18-9,12 IN.LG	1
	3	30	XBOZZ	94833	151K0021-16	.WIRE LEAD	1
	3	31	PAOZZ	96906	MS25036-102	.. TERMINAL,LUG	1
	3	32	MOOZZ	94833	151K0021-16/3	.. WIRE,ELEC MAKE FROM M5086/2-18-9,12 IN.LG	1
	3	33	XBOZZ	94833	151K0021-17	.WIRE LEAD	1
	3	34	PAOZZ	96906	MS25036-102	.. TERMINAL,LUG	1
	3	35	MOOZZ	94833	151K0021-17/3	.. WIRE,ELEC MAKE FROM M5086/2-18-9,106 IN.LG	1
	3	36	XBOZZ	94833	151K0021-18	.WIRE LEAD	1
	3	37	PAOZZ	96906	MS25036-102	.. TERMINAL,LUG	1
	3	38	MOOZZ	94833	151K0021-18/3	.. WIRE,ELEC MAKE FROM M5086/2-18-9,104 IN.LG	1
	3	39	XBOZZ	94833	151K0021-19 TO 22	.CABLE	1

GROUP 02 ELECTRICAL AND CONTROL

FIGURE 03 CONTROL BOX WIRES AND CABLES

PLSN No.	Fig No.	Item No.	SMR Code	CAGE Code	Part Number	Description and Usable On Codes (UOC)	Qty
	3	40	PAOZZ	19200	12712937-1 00779 60414-1 00779 60249-2	..RECEPTACLE,SINGLE CIRCUIT CONNECTOR	3
	3	41	PAOZZ	19200	12712936 00779 480054-3	..HOUSING,RECEPTACLE	3
	3	42	PAOZZ	96906	MS25036-108	..TERMINAL,LUG	2
	3	43	MOOZZ	94833	151K0021-19/14	..CABLE MAKE FROM 500K1915-1,102 IN.LG	1
	3	44	XBOZZ	94833	151K0021-23	..WIRE LEAD	1
	3	45	PAOZZ	96906	MS25036-102	..TERMINAL,LUG	1
	3	46	MOOZZ	94833	151K0021-23/3	..WIRE,ELEC MAKE FROM M5086/2-18-9,24 IN.LG	1
	3	47	XBOZZ	94833	151K0021-24	..WIRE LEAD	1
	3	48	PAOZZ	97403	13216E6191-1 00779 640903-1 59730 RA257	..TERMINAL,LUG	1
	3	49	MOOZZ	94833	151K0021-24/3	..WIRE,ELEC MAKE FROM M5086/2-18-9,12 IN.LG	1
	3	50	XBOZZ	94833	151K0021-25	..WIRE LEAD	1
	3	51	PAOZZ	16004	82898 1W564 B-972 FORD SSD-437	..TERMINAL,FEMALE	1
	3	52	PAOZZ	96906	MS25036-112	..TERMINAL,LUG	1
	3	53	MOOZZ	94833	151K0021-25/3	..WIRE,ELEC MAKE FROM M5086/2-18-9,120 IN.LG	1
	3	54	XBOZZ	94833	151K0021-26	..WIRE LEAD	1
	3	55	PAOZZ	96906	MS25036-102	..TERMINAL,LUG	1
	3	56	PAOZZ	97403	13216E6191-1 00779 640903-1 59730 RA257	..TERMINAL,LUG	1
	3	57	MOOZZ	94833	151K0021-26/3	..WIRE,ELEC MAKE FROM M5086/2-18-9,24 IN.LG	1
	3	58	XBOZZ	94833	151K0021-27	..WIRE LEAD	1
	3	59	PAOZZ	97403	13216E6191-1 00779 640903-1 59730 RA257	..TERMINAL,LUG	2
	3	60	MOOZZ	94833	151K0021-27/3	..WIRE,ELEC MAKE FROM M5086/2-18-9,12 IN.LG	1
	3	61	XBOZZ	94833	151K0021-28	..WIRE LEAD	1
	3	62	PAOZZ	96906	MS25036-149	..TERMINAL,LUG	1
	3	63	PAOZZ	19200	12712937-2 00779 42282-2	..RECEPTACLE,SINGLE CIRCUIT CONNECTOR	1
	3	64	PAOZZ	19200	12712936 00779 480054-3	..HOUSING,RECEPTACLE	1
	3	65	MOOZZ	94833	151K0021-28/3	..WIRE,ELEC MAKE FROM M5086/2-18-9,120 IN.LG	1
	3	66	XBOZZ	94833	151K0021-29	..WIRE LEAD	1
	3	67	PAOZZ	96906	MS25036-102	..TERMINAL,LUG	1
	3	68	MOOZZ	94833	151K0021-29/3	..WIRE,ELEC MAKE FROM M5086/2-18-9,108 IN.LG	1
	3	69	XBOZZ	94833	151K0021-30	..WIRE LEAD	1
	3	70	PAOZZ	96906	MS25036-149	..TERMINAL,LUG	1
	3	71	PAOZZ	19200	12712937-2 00779 42282-2	..RECEPTACLE,SINGLE CIRCUIT CONNECTOR	1
	3	72	PAOZZ	19200	12712936 00779 480054-3	..HOUSING,RECEPTACLE	1
	3	73	MOOZZ	94833	151K0021-30/3	..WIRE,ELEC MAKE FROM M5086/2-18-9,120 IN.LG	1
	3	74	XBOZZ	94833	151K0021-31	..WIRE LEAD	1
	3	75	PAOZZ	96906	MS25036-102	..TERMINAL,LUG	1

GROUP 02 ELECTRICAL AND CONTROL

FIGURE 03 CONTROL BOX WIRES AND CABLES

PLSN No.	Fig No.	Item No.	SMR Code	CAGE Code	Part Number	Description and Usable On Codes (UOC)	Qty
	3	76	MOOZZ	94833	151K0021-31/3	..WIRE,ELEC MAKE FROM M5086/2-18-9,106 IN.LG	1
	3	77	XBOZZ	94833	151K0021-32	.WIRE LEAD	1
	3	78	PAOZZ	96906	MS25036-102	.. TERMINAL,LUG	1
	3	79	MOOZZ	94833	151K0021-32/3	..WIRE,ELEC MAKE FROM M5086/2-18-9,12 IN.LG	1
	3	80	XBOZZ	94833	151K0021-33	.WIRE LEAD	1
	3	81	PAOZZ	97403	13216E6191-1 00779 640903-1 59730 RA257	.. TERMINAL,LUG	1
	3	82	PAOZZ	96906	MS25036-102	.. TERMINAL,LUG	1
	3	83	MOOZZ	94833	151K0021-33/3	..WIRE,ELEC MAKE FROM M5086/2-18-9,24 IN.LG	1
	3	84	XBOZZ	94833	151K0021-34	.WIRE LEAD	1
	3	85	PAOZZ	97403	13216E6191-1 00779 640903-1 59730 RA257	.. TERMINAL,LUG	2
	3	86	MOOZZ	94833	151K0021-34/3	..WIRE,ELEC MAKE FROM M5086/2-18-9,12 IN.LG	1
	3	87	XBOZZ	94833	151K0021-35	.WIRE LEAD	1
	3	88	PAOZZ	97403	13216E6191-1 00779 640903-1 59730 RA257	.. TERMINAL,LUG	2
	3	89	MOOZZ	94833	151K0021-35/3	..WIRE,ELEC MAKE FROM M5086/2-18-9,3 IN.LG	1
	3	90	XBOZZ	94833	151K0021-36	.WIRE LEAD	1
	3	91	PAOZZ	97403	13216E6191-1 00779 640903-1 59730 RA257	.. TERMINAL,LUG	1
	3	92	PAOZZ	96906	MS25036-103	.. TERMINAL,LUG	1
	3	93	MOOZZ	94833	151K0021-36/3	..WIRE,ELEC MAKE FROM M5086/2-18-9,24 IN.LG	1
	3	94	XBOZZ	94833	151K0021-37	.WIRE LEAD	1
	3	95	PAOZZ	97403	13216E6191-1 00779 640903-1 59730 RA257	.. TERMINAL,LUG	1
	3	96	PAOZZ	96906	MS25036-103	.. TERMINAL,LUG	1
	3	97	MOOZZ	94833	151K0021-37/3	..WIRE,ELEC MAKE FROM M5086/2-18-9,12 IN.LG	1
	3	98	XBOZZ	94833	151K0021-38	.WIRE LEAD	1
	3	99	PAOZZ	97403	13216E6191-1 00779 640903-1 59730 RA257	.. TERMINAL,LUG	1
	3	100	PAOZZ	96906	MS25036-103	.. TERMINAL,LUG	1
	3	101	MOOZZ	94833	151K0021-38/3	..WIRE,ELEC MAKE FROM M5086/2-18-9,12 IN.LG	1
	3	102	XBOZZ	94833	151K0021-39	.WIRE LEAD	1
	3	103	PAOZZ	96906	MS25036-102	.. TERMINAL,LUG	2
	3	104	MOOZZ	94833	151K0021-39/3	..WIRE,ELEC MAKE FROM M5086/2-18-9,24 IN.LG	1
	3	105	XBOZZ	94833	151K0021-40	.WIRE LEAD	1
	3	106	PAOZZ	19200	12712937-2 00779 42282-2	.. RECEPTACLE,SINGLE CIRCUIT CONNECTOR	1
	3	107	PAOZZ	19200	12712936 00779 480054-3	.. HOUSING,RECEPTACLE	1
	3	108	PAOZZ	96906	MS25036-102	.. TERMINAL,LUG	1
	3	109	MOOZZ	94833	151K0021-40/3	..WIRE,ELEC MAKE FROM M5086/2-18-9,120 IN.LG	1
	3	110	XBOZZ	94833	151K0021-41	.WIRE LEAD	1

GROUP 02 ELECTRICAL AND CONTROL

FIGURE 03 CONTROL BOX WIRES AND CABLES

PLSN No.	Fig No.	Item No.	SMR Code	CAGE Code	Part Number	Description and Usable On Codes (UOC)	Qty
	3	111	PAOZZ	19200	12712937-2	..RECEPTACLE,SINGLE CIRCUIT	1
				00779	42282-2	CONNECTOR	
	3	112	PAOZZ	19200	12712936	..HOUSING,RECEPTACLE	1
				00779	480054-3		
	3	113	PAOZZ	96906	MS25036-102	..TERMINAL,LUG	1
	3	114	MOOZZ	94833	151K0021-41/3	..WIRE,ELEC MAKE FROM M5086/2-18-9,113 IN.LG	1
	3	115	XBOZZ	94833	151K0021-42	..WIRE LEAD	1
	3	116	PAOZZ	96906	MS25036-102	..TERMINAL,LUG	2
	3	117	MOOZZ	94833	151K0021-42/3	..WIRE,ELEC MAKE FROM M5086/2-18-9,12 IN.LG	1
	3	118	XBOZZ	94833	151K0021-43	..WIRE LEAD	1
	3	119	PAOZZ	96906	MS25036-102	..TERMINAL,LUG	2
	3	120	MOOZZ	94833	151K0021-43/3	..WIRE,ELEC MAKE FROM M5086/2-18-9,12 IN.LG	1
	3	121	XBOZZ	94833	151K0021-44	..WIRE LEAD	1
	3	122	PAOZZ	96906	MS25036-102	..TERMINAL,LUG	1
	3	123	PAOZZ	96906	MS25036-103	..TERMINAL,LUG	1
	3	124	MOOZZ	94833	151K0021-44/3	..WIRE,ELEC MAKE FROM M5086/2-18-9,12 IN.LG	1
	3	125	XBOZZ	94833	151K0021-45	..WIRE LEAD	1
	3	126	PAOZZ	19200	12712937-2	..RECEPTACLE,SINGLE CIRCUIT	1
				00779	42282-2	CONNECTOR	
	3	127	PAOZZ	19200	12712936	..HOUSING,RECEPTACLE	1
				00779	480054-3		
	3	128	PAOZZ	96906	MS25036-102	..TERMINAL,LUG	1
	3	129	MOOZZ	94833	151K0021-45/3	..WIRE,ELEC MAKE FROM M5086/2-18-9,100 IN.LG	1
	3	130	XBOZZ	94833	151K0021-46	..WIRE LEAD	1
	3	131	PAOZZ	96906	MS25036-102	..TERMINAL,LUG	1
	3	132	MOOZZ	94833	151K0021-46/3	..WIRE,ELEC MAKE FROM M5086/2-18-9,12 IN.LG	1
	3	133	XBOZZ	94833	151K0021-47	..WIRE LEAD	1
	3	134	PAOZZ	19200	12712937-2	..RECEPTACLE,SINGLE CIRCUIT	1
				00779	42282-2	CONNECTOR	
	3	135	PAOZZ	19200	12712936	..HOUSING,RECEPTACLE	1
				00779	480054-3		
	3	136	PAOZZ	96906	MS25036-102	..TERMINAL,LUG	1
	3	137	MOOZZ	94833	151K0021-47/3	..WIRE,ELEC MAKE FROM M5086/2-18-9,120 IN.LG	1
	3	138	XBOZZ	94833	151K0021-48	..WIRE LEAD	1
	3	139	PAOZZ	96906	MS25036-102	..TERMINAL,LUG	1
	3	140	MOOZZ	94833	151K0021-48/3	..WIRE,ELEC MAKE FROM M5086/2-18-9,20 IN.LG	1
	3	141	XBOZZ	94833	151K0021-49	..WIRE LEAD	1
	3	142	PAOZZ	96906	MS25036-112	..TERMINAL,LUG	2
	3	143	MOOZZ	94833	151K0021-49/1	..WIRE,ELEC MAKE FROM M5086/2-12-9,12 IN.LG	1
	3	144	XBOZZ	94833	151K0021-50	..WIRE LEAD	1
	3	145	PAOZZ	96906	MS25036-149	..TERMINAL,LUG	1
	3	146	PAOZZ	16004	82898	..TERMINAL,FEMALE	1
				1W564	B-972		
	3	147	MOOZZ	94833	151K0021-50/3	..WIRE,ELEC MAKE FROM M5086/2-18-9,100 IN.LG	1
	3	148	XBOZZ	94833	151K0021-51	..WIRE LEAD	1
	3	149	PAOZZ	16004	82898	..TERMINAL,FEMALE	2
				1W564	B-972		
				FORD	SSD-437		

GROUP 02 ELECTRICAL AND CONTROL

FIGURE 03 CONTROL BOX WIRES AND CABLES

PLSN No.	Fig No.	Item No.	SMR Code	CAGE Code	Part Number	Description and Usable On Codes (UOC)	Qty
	3	150	MOOZZ	94833	151K0021-51/3	..WIRE,ELEC MAKE FROM M5086/2-18-9,96 IN.LG	1
	3	151	XBOZZ	94833	151K0042-1	..RESISTOR ASSEMBLY	1
	3	152	PAOZZ	96906	MS25036-149	.. TERMINAL,LUG	1
	3	153	PAOZZ	96906	MS25036-148	.. TERMINAL,LUG	1
	3	154	MOOZZ	94833	151K0042-1/4	.. INSULATION,SLEEVING MAKE FROM M23053/5-102-0,1-1/2 IN.LG	2
	3	155	PAOZZ	12697 94833	VC10F-5K 500K1998	..RESISTOR,10W	1
	3	156	XBOZZ	94833	151K0021-52	..WIRE LEAD	1
	3	157	PAOZZ	96906	MS25036-112	.. TERMINAL,LUG	1
	3	158	MOOZZ	94833	151K0021-52/17	..WIRE,ELEC MAKE FROM M5086/2-10-9,60 IN.LG	1
	3	159	XBOZZ	94833	151K0021-53	..WIRE LEAD	1
	3	160	PAOZZ	96906	MS25036-112	.. TERMINAL,LUG	1
	3	161	MOOZZ	94833	151K0021-53/17	..WIRE,ELEC MAKE FROM M5086/2-10-9,60 IN.LG	1
	3	162	XBOZZ	94833	151K0021-54	..WIRE LEAD	1
	3	163	PAOZZ	96906	MS25036-112	.. TERMINAL,LUG	1
	3	164	MOOZZ	94833	151K0021-54/17	..WIRE,ELEC MAKE FROM M5086/2-10-9,60 IN.LG	1
	3	165	XBOZZ	94833	151K0021-55	..WIRE LEAD	1
	3	166	PAOZZ	96906	MS25036-112	.. TERMINAL,LUG	1
	3	167	MOOZZ	94833	151K0021-55/17	..WIRE,ELEC MAKE FROM M5086/2-10-9,60 IN.LG	1
	3	168	XBOZZ	94833	151K0021-56	..WIRE LEAD	1
	3	169	PAOZZ	96906	MS25036-102	.. TERMINAL,LUG	1
	3	170	PAOZZ	96906	MS25036-112	.. TERMINAL,LUG	1
	3	171	MOOZZ	94833	151K0021-56/17	..WIRE,ELEC MAKE FROM M5086/2-10-9,60 IN.LG	1
	3	172	XBOZZ	94833	151K0021-57	..WIRE LEAD	1
	3	161	PAOZZ	96906	MS25036-102	.. TERMINAL,LUG	1
	3	162	PAOZZ	96906	MS25036-157	.. TERMINAL,LUG	1
	3	162	MOOZZ	94833	151K0021-57/17	..WIRE,ELEC MAKE FROM M5086/2-10-9,24 IN.LG	1

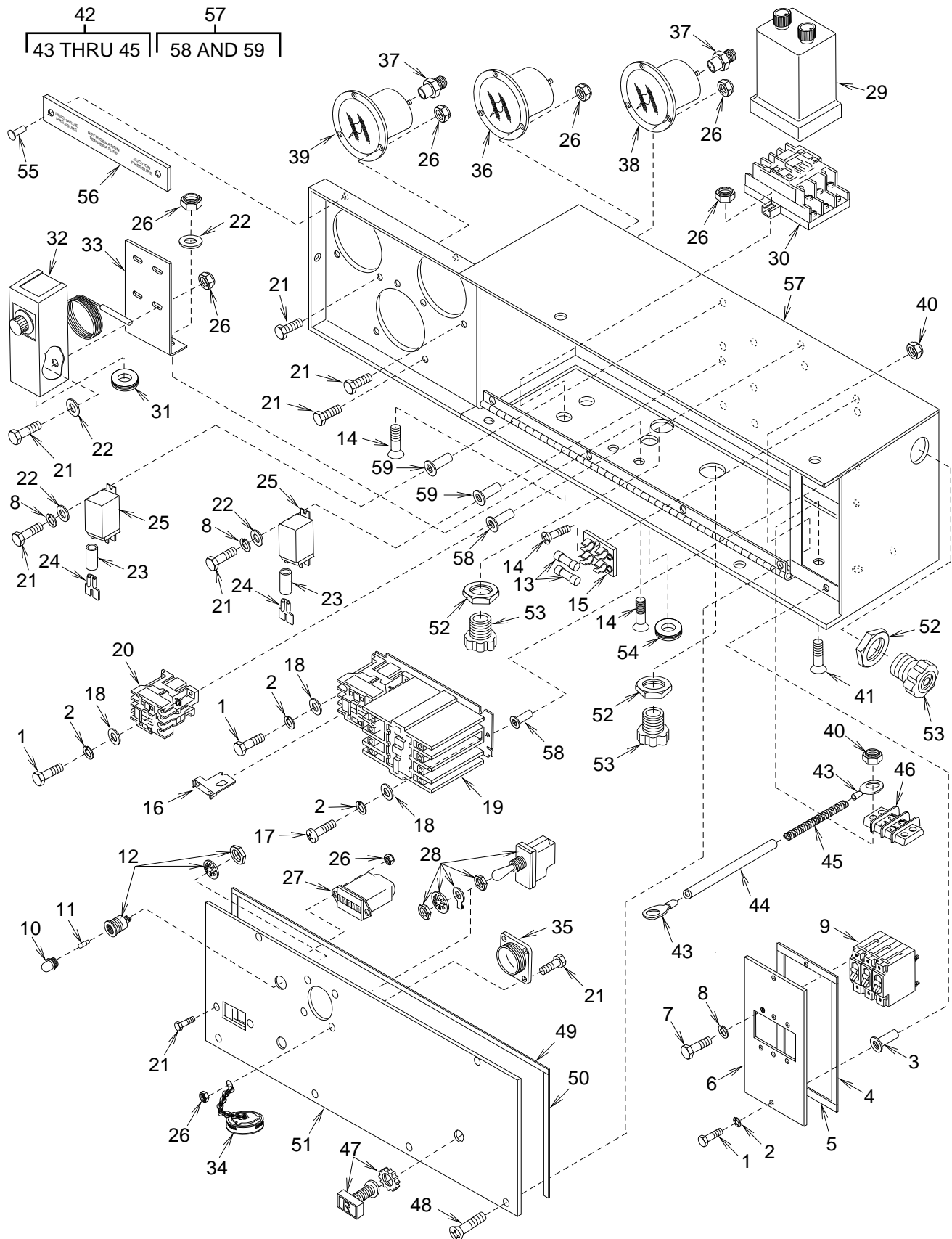


Figure 4. Control Box Assembly

GROUP 02 ELECTRICAL AND CONTROL

FIGURE 04 CONTROL BOX

PLSN No.	Fig No.	Item No.	SMR Code	CAGE Code	Part Number	Description and Usable On Codes (UOC)	Qty
	4	1	PAOZZ	94833	500K1928-19	.BOLT,HEX HD	7
	4	2	PAOZZ	94833	500K1950-3	.WASHER,SPRING LOCK	8
	4	3	PAOZZ	96906	MS27130-S19	.NUT,BLIND-FLAT HEAD	2
	4	4	MFFZZ	94833	151K0030	.GASKET,CIRCUIT BREAKER PANEL MAKE FROM ASTM D1056-2A2C2F2,1/8 X 1/2 X 5-7/8	2
	4	5	MFFZZ	94833	151K0031	.GASKET,CIRCUIT BREAKER PANEL MAKE FROM ASTM D1056-2A2C2F2,1/8 X 3/4 X 3-1/4	2
	4	6	XBOZZ	94833	151K0018	.COVER,CIRCUIT BREAKER	1
	4	7	PAOZZ	94833	500K1928-1	.BOLT,HEX HD	6
	4	8	PAOZZ	94833	500K1950-1	.WASHER,SPRING LOCK	10
	4	9	PAOZZ	74193	AM3-A3-A-0035-2E	.CIRCUIT BREAKER	1
				94833	500K1914-1		
	4	10	PAOZZ	83330	125-1131-403	.CAP,INDICATOR (RED)	1
				94833	500K1891-1		
	4	11	PAOZZ	92966	120MB	.LAMP,MINIATURE	1
				94833	500K1892-3		
	4	12	PAOZZ	83330	125-1310-11-103	.BASE,INDICATOR	1
				94833	500K1890		
	4	13	PAOZZ	71400	MTH-6AMP	.FUSE	2
				94833	55120-3		
	4	14	PAOZZ	96906	MS24693-C30	.SCREW,MACH-CSKH	6
	4	15	PAOZZ	71400	S-8301-2	.FUSE BLOCK	1
				94833	500K1996		
	4	16	PAOZZ	27191	H2013A-3	.HEATER,THERMAL OVERLOAD	3
				94833	500K1899-1		
					O1121 W60		
	4	17	PAOZZ	94833	53575-10-8	.SCREW,MACH-PAN HD	1
	4	18	PAOZZ	94833	500K1926-3	.WASHER,FLAT	6
	4	19	PAOZZ	27191	AN16DNOEB	.MOTOR STARTER	1
				94833	500K1898-1		
	4	20	PAOZZ	94833	152K0189-1	.CONTACTOR	1
	4	21	PAOZZ	94833	500K1928-5	.BOLT,HEX,HD	23
	4	22	PAOZZ	94833	500K1926-1	.WASHER,FLAT	10
	4	23	MFFZZ	94833	151K0009-1/54	.INSULATION,SLEEVING MAKE FROM M23053/5-107-9,0.88 IN. LG	5
	4	24	PAOZZ	97403	13225E8194	.FASTON TAB ADAPTER	5
					00779 61045-1		
	4	25	PAOZZ	28478	TYPE 265FB	.RELAY,CONTROL	2
				94833	500K1904-1		
	4	26	PAOZZ	94833	500K1927-1	.NUT,SELF LOCKING	29
	4	27	PAOZZ	74400	20007	.HOURMETER	1
				94833	500K1897		
	4	28	PAOZZ	96906	MS24523	.SWITCH,TOGGLE	1
	4	29	PAOZZ	1HM04	TDF-220-AKB-24H	.TIMER,REPEAT CYCLE	1
				94833	500K1905-1		
	4	30	PAOZZ	1HM04	QC-11	.SOCKET,RELAY MOUNT	1
				94833	500K1912		
	4	31	PAOZZ	96906	MS35489-118	.GROMMET,RUBBER	1
	4	32	PAOZZ	50831	A19AAD-25D	.THERMOSTAT,REMOTE BULB	1
				94833	500K1902		
	4	33	XBOZZ	94833	151K0020	.BRACKET,TEMPERATURE CONTROL SWITCH	1
	4	34	PAOZZ	96906	MS25043-24DA	.COVER,ELECTRICAL CONNECTOR	1
	4	35	XBOZZ	94833	150K0183	.DUMMY STOWAGE CONNECTOR	1
	4	36	PAOZZ	96906	MS27211-2	.THERMOMETER	1
	4	37	PAOZZ	41947	AW4622	.COUPLING,FEMALE	2
				94833	51824-2		
	4	38	PAOZZ	94833	500K1857-1C	.GAGE,COMPOUND	1



GROUP 02 ELECTRICAL AND CONTROL

FIGURE 04 CONTROL BOX

PLSN No.	Fig No.	Item No.	SMR Code	CAGE Code	Part Number	Description and Usable On Codes (UOC)	Qty
	4	39	PAOZZ	94833	500K1857-1P	.GAGE,PRESSURE	1
	4	40	PAOZZ	94833	500K1927-2	.NUT,SELF LOCKING	6
	4	41	PAOZZ	96906	MS24693-C53	.SCREW,MACH-CSKH	2
	4	42	XBOZZ	94833	150K0201-1	.STRAP,GROUND	1
	4	43	PAOZZ	96906	MS20659-130	..TERMINAL,CRIMP STYLE	2
	4	44	MOOZZ	94833	150K0201-1/3	..INSULATION,SLEEVING MAKE FROM M23053/5-107-0,4.00 IN.LG	1
	4	45	MOOZZ	94833	150K0201-1/1	..BRAID,WIRE,TUBULAR MAKE FROM QQ-B-575/R30T281,4.00 IN.LG	1
	4	46	PAOZZ	81349	39TB2	.TERMINAL BOARD	1
				81349	MIL-T-55164/3		
	4	47	XBOZZ	94833	151K0041-1	.RESET BUTTON	1
	4	48	PAOZZ	96906	MS24693-C28	.SCREW,MACH-CSKH	4
	4	49	MFFZZ	94833	151K0028	.GASKET,CONTROL BOX,TOP MAKE FROM ASTM D1056-2A2C2F2,1/8 X 1/2 X 19-3/4	1
	4	50	MFFZZ	94833	150K0096	.GASKET,CONTROL BOX,SIDE MAKE FROM ASTM D1056-2A2C2F2,1/8 X 1/2 X 6-27/32	2
	4	51	XBOZZ	94833	151K0010	.COVER,CONTROL BOX	1
	4	52	PAOZZ	57958	5054520-3	.LOCKNUT,CONDUIT	3
				59730	142		
	4	53	PAOZZ	57958	5054519-9	.BUSHING,STRAIN RELIEF,CABLE	3
				59730	2535		
	4	54	PAOZZ	96906	MS35489-2	.GROMMET,RUBBER	1
	4	55	PAOZZ	96906	MS24662-5	.RIVET	2
	4	56	XBOZZ	94833	120K1472	.NAMEPLATE,GAGES	1
	4	57	XBOZZ	94833	151K0017-1	.CONTROL BOX	1
	4	58	PAOZZ	96906	MS27130-CR19K	..NUT,BLIND-FLAT HEAD	6
	4	59	PAOZZ	80205	NAS1329C06KB75	..NUT,BLIND RIVET	6

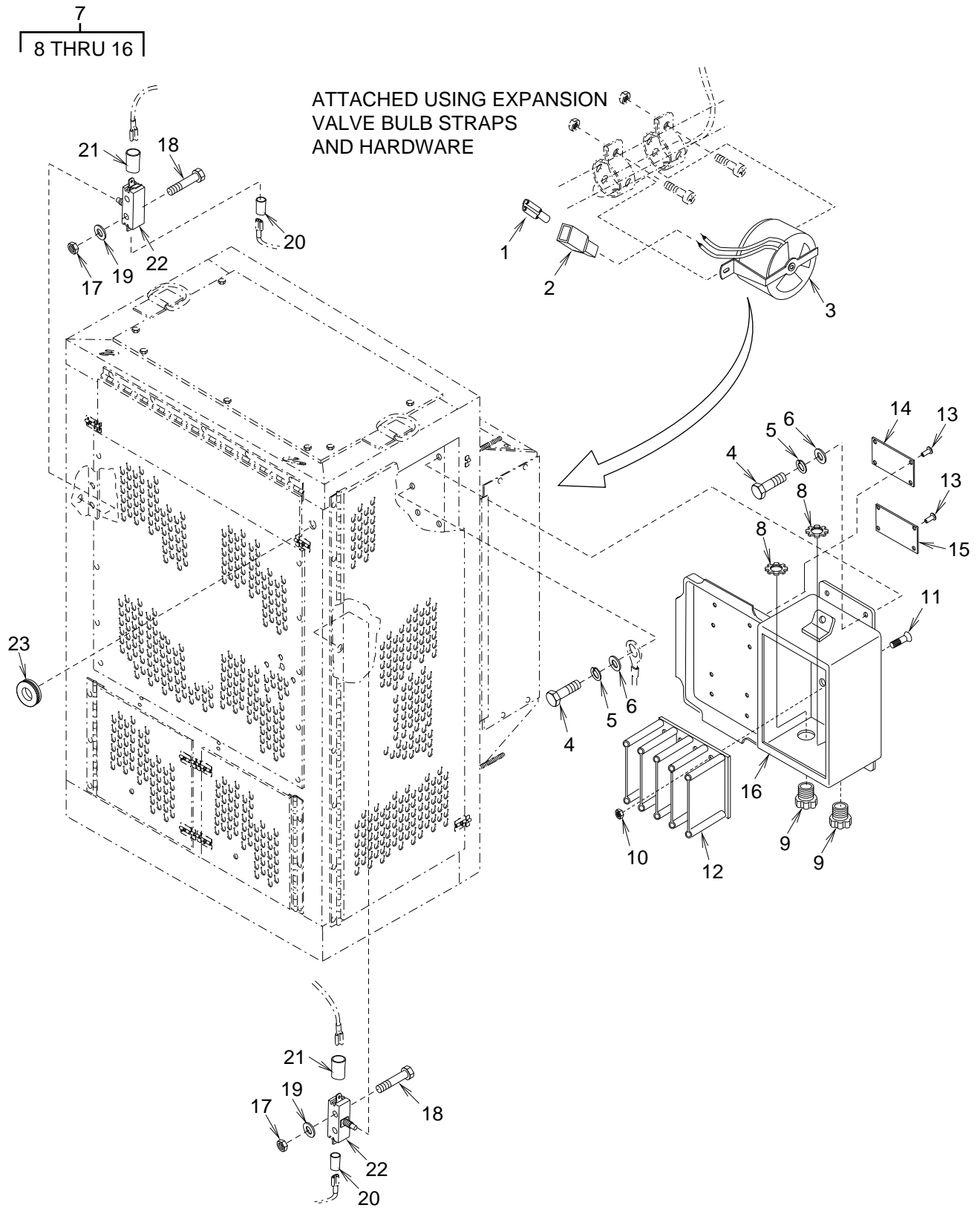


Figure 5. Defrost Temperature Switch, Door Switches, and Electrical Enclosure Assembly

GROUP 02 ELECTRICAL AND CONTROL

FIGURE 05 DEFROST TEMPERATURE SWITCH, DOOR SWITCHES,  
AND ELECTRICAL ENCLOSURE ASSEMBLY

PLSN No.	Fig No.	Item No.	SMR Code	CAGE Code	Part Number	Description and Usable On Codes (UOC)	Qty
	5	1	PAOZZ	00779	42565-2	TAB,SINGLE CIRCUIT CONNECTOR	2
				19200	12712938-2		
	5	2	PAOZZ	00779	480053-3	HOUSING,TAB	2
				19200	12712935		
	5	3	PAOZZ	14859	20640L15-496- Z10L45-2.0	SWITCH,DEFROST TEMPERATURE	1
				94833	56031		
	5	4	PAOZZ	94833	500K1928-28	BOLT.HEX HD	5
	5	5	PAOZZ	94833	500K1950-4	WASHER,SPRING LOCK	5
	5	6	PAOZZ	94833	500K1926-4	WASHER,FLAT	5
	5	7	XBOZZ	94833	149K0018-3	ENCLOSURE ASSEMBLY	1
	5	8	PAOZZ	24624	5054520-3	.LOCKNUT, CONDUIT	2
				59730	142		
	5	9	PAOZZ	24624	5054519-9	.BUSHING,STRAIN RELIEF,CABL	2
				59730	2535		
	5	10	PAOZZ	94833	500K1927-2	.NUT,HEX,SELF LOCKING	4
	5	11	PAOZZ	96906	MS24693-C48	.SCREW,MACH-CSKH	4
	5	12	PAOZZ	21574	62104	.BLOCK,POWER DISTRIBUTION	1
				94833	500K2022		
	5	13	PAOZZ	96906	MS24662-5	.RIVET	8
	5	14	XBOZZ	94833	120K1504-1	.PLATE,ELECTRICAL OPERATION	1
	5	15	XBOZZ	94833	120K1504-3	.PLATE,ELECTRICAL OPERATION	1
	5	16	XBOZZ	94833	149K0020-1	.ENCLOSURE	1
	5	17	PAOZZ	94833	500K1927-1	NUT,SELF LOCKING	4
	5	18	PAOZZ	94833	500K1928-8	BOLT.HEX HD	4
	5	19	PAOZZ	94833	500K1926-1	WASHER,FLAT	4
	5	20	MOOZZ	94833	151K0000-1/204	INSULATION,SLEEVING MAKE FROM M23053/5-106-9,1.50 IN. LG	2
	5	21	MOOZZ	94833	151K0000-1/205	INSULATION,SLEEVING MAKE FROM M23053/5-107-9,1.50 IN. LG	2
	5	22	PAOZZ	01963	E13-00M	SWITCH,PUSH	2
				94833	55230		
	5	23	PAOZZ	96906	MS35489-123	GROMMET,RUBBER	1

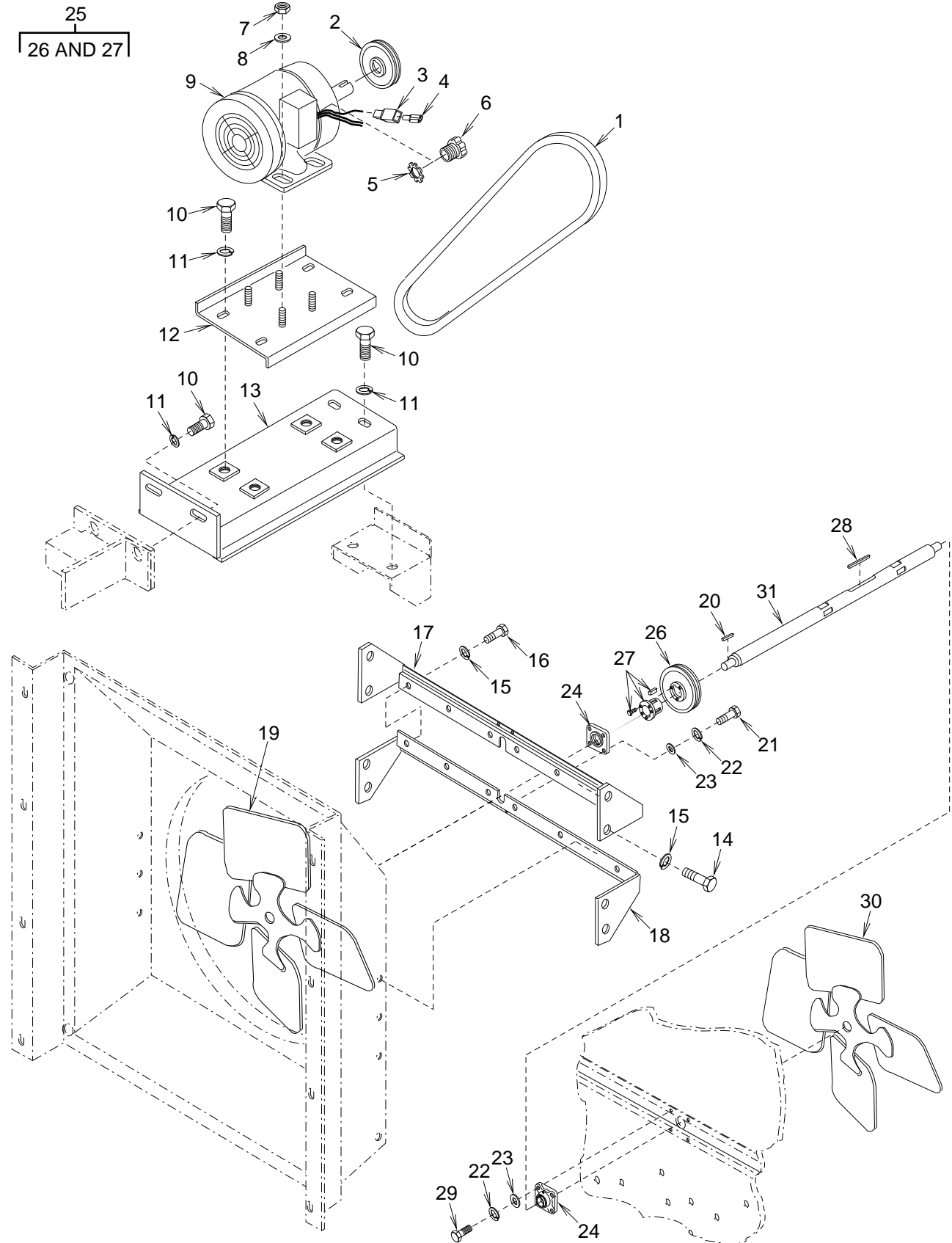


Figure 6. Power Transmission and Air Handling

GROUP 03 POWER TRANSMISSION/AIR HANDLING

FIGURE 06 POWER TRANSMISSION AND AIR HANDLING

PLSN No.	Fig No.	Item No.	SMR Code	CAGE Code	Part Number	Description and Usable On Codes (UOC)	Qty
	6	1	PAOZZ	71176	A60	V BELT,A-SECTION	1
				94833	500K1952-26		
	6	2	PAOZZ	71176	BK34	PULLEY,MOTOR DRIVE	1
				94833	500K1956		
	6	3	PAOZZ	00779	42565-2	TAB,SINGLE CIRCUIT CONNECTOR	3
				19200	12712938-2		
	6	4	PAOZZ	00779	480053-3	HOUSING,TAB	3
				19200	12712935		
	6	5	PAOZZ	24624	5054520-2	LOCKNUT, CONDUIT	1
				59730	141		
	6	6	PAOZZ	24624	5054519-4	BUSHING,STRAIN RELIEF,CABLE	1
				59730	2523		
	6	7	PAOZZ	94833	500K1927-5	NUT,SELF LOCKING	4
	6	8	PAOZZ	94833	500K1926-5	WASHER,FLAT	12
	6	9	PAOZZ	94833	500K1861-2	MOTOR,AC	1
	6	10	PAOZZ	94833	500K1928-44	BOLT,HEX HD	8
	6	11	PAOZZ	94833	500K1950-5	WASHER,SPRING LOCK	8
	6	12	XBOZZ	94833	151K0038-1	BRACKET,ADJUSTING-MOTOR MOUNT	1
	6	13	XBOZZ	94833	151K0032-1	BRACKET,MOTOR MOUNT	1
	6	14	PAOZZ	94833	500K1928-30	BOLT,HEX HD	6
	6	15	PAOZZ	94833	500K1950-4	WASHER,SPRING LOCK	6
	6	16	PAOZZ	94833	500K1928-28	BOLT,HEX HD	6
	6	17	XBOZZ	94833	150K0101-1	TOP SUPPORT,BEARING FLANGE-CONDENSER FAN END	1
	6	18	XBOZZ	94833	150K0228-1	BOTTOM SUPPORT,BEARING FLANGE-CONDENSER FAN END	1
	6	19	PAOZZ	22038	SNL2421-4,I-CW	FAN,CONDENSER	1
				94833	500K1864-2		
				35197	F10H082420-5/8-CCW-DIS		
	6	20	PAOZZ	96906	MS20066-185	KEY,MACHINE-SQUARE	1
	6	21	PAOZZ	94833	500K1928-59	BOLT,HEX HD	4
	6	22	PAOZZ	94833	500K1950-6	WASHER,SPRING LOCK	8
	6	23	PAOZZ	94833	500K1926-6	WASHER,FLAT	8
	6	24	PAOZZ	94833	500K1866	BEARING,FLANGE	2
	6	25	PAOZZ	94833	500K1955	PULLEY,FAN DRIVE	1
	6	26	PAOZZ	71176	ITA44	.SHEAVE,TWO GROOVE	1
				94833	500K1955-1		
	6	27	PAOZZ	71176	P1	.BUSHING,SPLIT TAPER	1
				94833	500K1955-2		
	6	28	PAOZZ	96906	MS20066-257	KEY, MACH.-SQUARE	1
	6	29	PAOZZ	94833	500K1928-58	BOLT,HEX HD	4
	6	30	PAOZZ	22038	SNL1821-3,I-CCW	FAN,EVAPORATOR	1
				94833	500K1865-3		
				35197	T10S08A-1830-1/2-CW-DIS		
	6	31	XBOZZ	94833	151K0037	SHAFT,FAN DRIVE	1

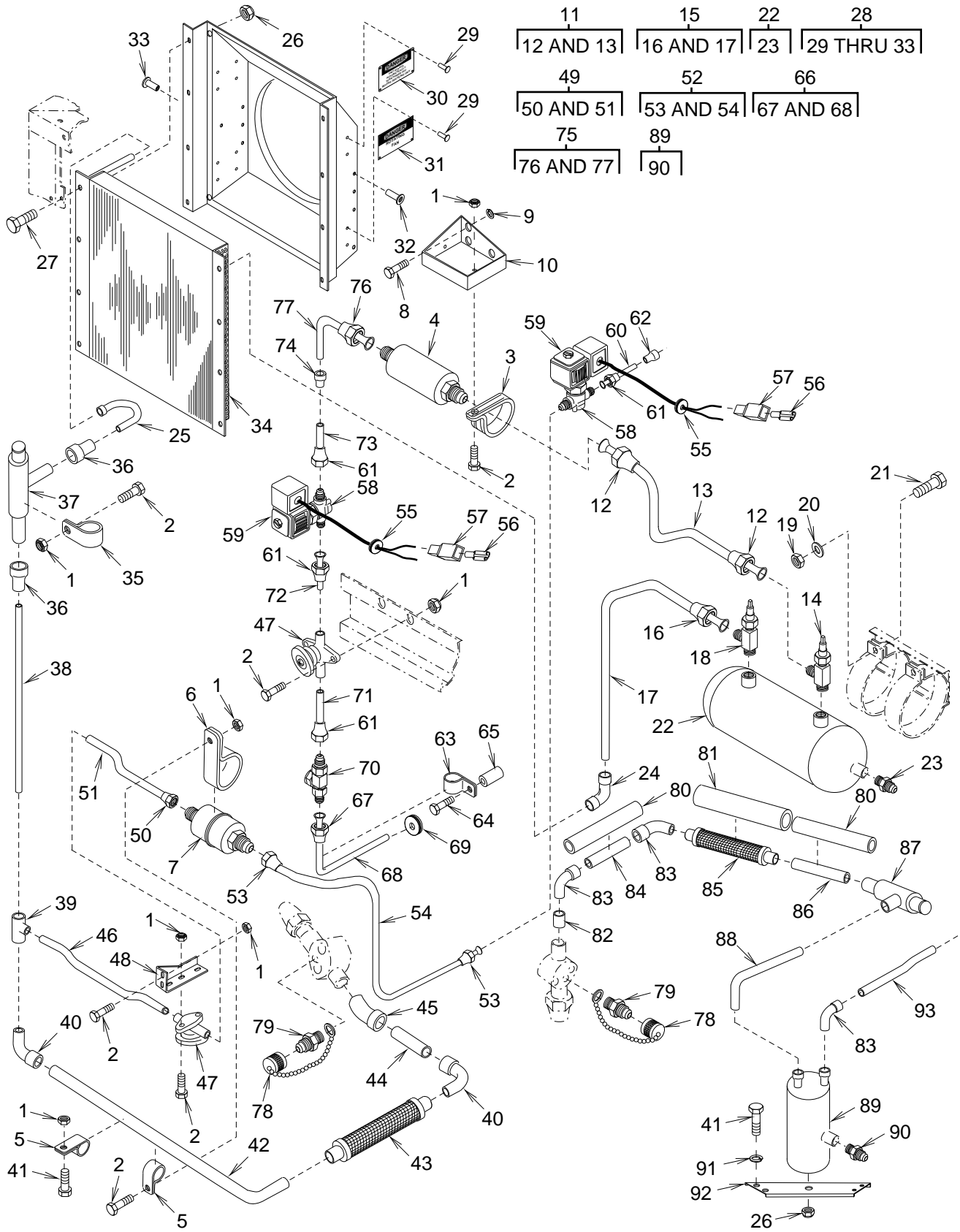


Figure 7. Refrigerant Piping, Condenser Section

GROUP 04 REFRIGERATION SYSTEM

FIGURE 07 REFRIGERATION PIPING, CONDENSER SECTION

PLSN No.	Fig No.	Item No.	SMR Code	CAGE Code	Part Number	Description and Usable On Codes (UOC)	Qty
	7	1	PAFZZ	94833	500K1927-3	NUT,SELF LOCKING	11
	7	2	PAFZZ	94833	500K1928-19	BOLT,HEX HD	10
	7	3	PAFZZ	96906	MS21919WDG-46	CLAMP,LOOP TYPE,CUSHIONED	2
	7	4	PAFZZ	96906	MS35845-3	DEHYDRATOR	1
				94833	500K1851-3		
	7	5	PAFZZ	96906	MS21919WDG-14	CLAMP,LOOP TYPE,CUSHIONED	2
	7	6	PAFZZ	96906	MS21919WDG-32	CLAMP,LOOP TYPE,CUSHIONED	1
	7	7	PAFZZ	97765	FC6	STRAINER	1
				94833	500K1860-2		
	7	8	PAFZZ	94833	500K1928-28	BOLT,HEX HD	3
	7	9	PAFZZ	94833	500K1950-3	WASHER,SPRING LOCK	3
	7	10	PBOZZ	94833	150K0113	BRACKET,FILTER DRIER	1
	7	11	XBFZZ	94833	151K0052-1	TUBE,RECEIVER TO FILTER DRIER	1
	7	12	PAFZZ	96906	MS35872-4	.NUT,FLARE	2
	7	13	MFFZZ	94833	151K0052-1/T	.TUBE,COPPER 18.69 IN. LG MAKE FROM ASTM B280,O.500 OD X 0.032 WALL COPPER TUBING	1
	7	14	PAFZZ	97765	27035	VALVE,ISOLATION	1
				94833	500K1885-2		
	7	15	XBFZZ	94833	151K0046-1	TUBE,RECEIVER INLET	1
	7	16	PAFZZ	96906	MS35872-5	.NUT,FLARE	1
	7	17	MFFZZ	94833	151K0046-1/T	.TUBE,COPPER 37.75 IN. LG MAKE FROM ASTM B280,O.625 OD X 0.035 WALL COPPER TUBING	1
	7	18	PAFZZ	97765	27036	VALVE,ISOLATION	1
				94833	500K1885-3		
	7	19	PAFZZ	94833	500K1927-5	NUT,SELF LOCKING	2
	7	20	PAFZZ	94833	500K1926-5	WASHER, FLAT	2
	7	21	PAFZZ	94833	500K1928-45	BOLT,HEX HD	2
	7	22	PAFZZ	97765	3391	RECEIVER	1
				94833	500K1850-3		
	7	23	PAFZZ	97765	983-430	. PLUG,FUSIBLE	1
	7	24	PAFZZ	41947	W-2022	ELBOW,TUBE	1
				97403	13216E6190-4		
	7	25	MFFZZ	94833	151K0044	TUBE,CONDENSER TO REGULATOR 11.00 IN. LG MAKE FROM ASTM B280,O.875 OD X 0.045 WALL COPPER TUBING	1
	7	26	PAFZZ	94833	500K1927-6	NUT,SELF LOCKING	9
	7	27	PAFZZ	94833	500K1928-58	BOLT,HEX HD	8
	7	28	XBFZZ	94833	150K0083-1	SHROUD,CONDENSER	1
	7	29	PAFZZ	97403	13214E3789-2	.RIVET,BLIND	16
				07707	AD42H		
	7	30	XBFZZ	94833	500K1948	. PLATE,WARNING	2
	7	31	XBFZZ	81337	5-13-5421	. PLATE,DANGER	2
	7	32	PAFZZ	96906	MS27130-S133K	.NUT,PLAIN,BLIND RIVET	6
	7	33	PAFZZ	96906	MS27130-S20K	.NUT,PLAIN,BLIND RIVET	1
	7	34	PBFZZ	0A400	980095 3CZ0603B	CONDENSER,COIL	1
				94833	500K1849-2		
	7	35	PAFZZ	96906	MS21919WDG-30	CLAMP,LOOP-TYPE,CUSHIONED	1
	7	36	PAFZZ	41947	W-1737	BUSHING,FLUSH	2
				97403	13211E3799-14		
	7	37	PAFZZ	70255	IPR-10-1 1/8	VALVE,PRESSURE REGULATOR	1
					ODF-65/122		
				94833	500K1871-2		
				78462	ORI-10-65/225-H-		
					1 1/8 ODF		
	7	38	MFFZZ	94833	150K0161-1	TUBE,COPPER,STRAIGHT 26.38 IN. LG MAKE FROM ASTM B280,O.875 OD X 0.045 WALL COPPER TUBING	1

GROUP 04 REFRIGERATION SYSTEM

FIGURE 07 REFRIGERATION PIPING, CONDENSER SECTION

PLSN No.	Fig No.	Item No.	SMR Code	CAGE Code	Part Number	Description and Usable On Codes (UOC)	Qty
	7	39	PAFZZ	41947	W-4035	TEE	1
				97403	13211E4043-44		
	7	40	PAFZZ	41947	W-2334	ELBOW,TUBE	2
				97403	13216E6176-6		
	7	41	PAFZZ	94833	500K1928-21	BOLT,HEX HD	5
	7	42	MFFZZ	94833	151K0045	TUBE,STREET ELBOW TO ISOLATOR 32.40 IN. LG	1
						MAKE FROM ASTM B280,0.875 OD X 0.045 WALL COPPER TUBING	
	7	43	PAFZZ	70510	3434FY	HOSE ASSEMBLY METAL (DISCHARGE)	1
				94833	21058-2		
				60535	FMH-60-14		
	7	44	MFFZZ	94833	150K0161-3	TUBE,COPPER,STRAIGHT 3.75 IN. LG	1
						MAKE FROM ASTM B280,0.875 OD X 0.045 WALL COPPER TUBING	
	7	45	PAFZZ	96906	MS35928-7U	ELBOW,STREET,45 DEGREE	1
	7	46	MFFZZ	94833	151K0047	TUBE,TEE TO HAND VALVE 8.32 IN. LG	1
						MAKE FROM ASTM B280,0.375 OD X 0.032 WALL COPPER TUBING	
	7	47	PAFZZ	96906	MS35880-2	VALVE,PACKLESS,STOP	2
	7	48	PBOZZ	94833	150K0098	BRACKET,HAND VALVE	1
	7	49	XBFZZ	94833	151K0048-1	TUBE,HANDVALVE TO STRAINER	1
	7	50	PAFZZ	96906	MS35872-3	.NUT,FLARE	1
	7	51	MFFZZ	94833	151K0048-1/T	.TUBE,COPPER 8.63 IN. LG	1
						MAKE FROM ASTM B280,0.375 OD X 0.032 WALL COPPER TUBING	
	7	52	XBFZZ	94833	151K0050-1	TUBE,STRAINER TO SOLENOID	1
	7	53	PAFZZ	96906	MS35872-3	.NUT,FLARE	2
	7	54	MFFZZ	94833	151K0050-1/T	.TUBE,COPPER 23.69 IN. LG	1
						MAKE FROM ASTM B280,0.375 OD X 0.032 WALL COPPER TUBING	
	7	55	PAFZZ	96906	MS35489-118	GROMMET,RUBBER	2
	7	56	PA0ZZ	00779	42565-2	TAB,SINGLE CIRCUIT CONNECTOR	4
				19200	12712938-2		
	7	57	PA0ZZ	00779	480053-3	HOUSING,TAB	4
				19200	12712935		
	7	58	PAFZZ	70255	200RB3F3	VALVE,SOLENOID(DEFROST & LIQUID LINE)	2
				94833	500K1869-1		
				78462	B9F2		
	7	59				.COIL,SOLENOID	1
	7	60	MFFZZ	94833	150K0198-7	TUBE,STRAIGHT,FLARE ONE END	1
	7	61	PAFZZ	96906	MS35872-3	NUT,FLARE	4
	7	62	PAFZZ	96906	MS35923-4	REDUCER,COUPLING	1
	7	63	PAFZZ	96906	MS21919WCG-6	CLAMP,LOOP TYPE,CUSHIONED	1
	7	64	PAFZZ	94833	500K1928-24	BOLT,HEX HD	1
	7	65	XBFZZ	97403	13226E0881-3	SLEEVE,SPACER	1
	7	66	XBFZZ	94833	151K0049-1	TUBE,SIGHT GLASS TO ELBOW	1
	7	67	PAFZZ	96906	MS35872-3	.NUT,FLARE	1
	7	68	MFFZZ	94833	151K0049-1/T	.TUBE,COPPER 18.47 IN. LG	1
						MAKE FROM ASTM B280,0.375 OD X 0.032 WALL COPPER TUBING	
	7	69	PAFZZ	96906	MS35489-14	GROMMET,RUBBER	1
	7	70	PAFZZ	70255	AMI-1MM3	INDICATOR,SIGHT	1
				94833	500K1852-2		
				78462	SA-13		
				30756	PSG-3MM		
	7	71	MFFZZ	94833	150K0198-13	TUBE,STRAIGHT,FLARE ONE END	1



GROUP 04 REFRIGERATION SYSTEM

FIGURE 07 REFRIGERATION PIPING, CONDENSER SECTION

PLSN No.	Fig No.	Item No.	SMR Code	CAGE Code	Part Number	Description and Usable On Codes (UOC)	Qty
	7	72	MFFZZ	94833	150K0198-3	TUBE,STRAIGHT,FLARE ONE END 2.00 IN. LG MAKE FROM ASTM B280,0.375 OD X 0.032 WALL COPPER TUBING	1
	7	73	MFFZZ	94833	150K0198-5	TUBE,STRAIGHT,FLARE ONE END 2.25 IN. LG MAKE FROM ASTM B280,0.375 OD X 0.032 WALL COPPER TUBING	1
	7	74	PAFZZ	96906	MS35923-3	REDUCER,COUPLING	1
	7	75	XBFZZ	94833	151K0051-1	TUBE,FILTER DRIER OUTLET	1
	7	76	PAFZZ	96906	MS35872-4	.NUT,FLARE	1
	7	77	MFFZZ	94833	151K0051-1/T	.TUBE,COPPER 14.72 IN. LG MAKE FROM ASTM B280,0.500 OD X 0.032 WALL COPPER TUBING	1
	7	78	PAFZZ	07295 97403	50570 13219E9540	CAP AND CHAIN	2
	7	79	PAFZZ	41947 94833	A-330 51283-2	COUPLING,HALF UNION FLARE	2
	7	80	MFFZZ	94833	151K0000-1/179	INSULATION,TUBE 48.00 IN LG MAKE FROM MIL-P-15280,FORM T 1-1/8 ID X 1/2 WALL INSULATION TUBING	1
	7	81	MFFZZ	94833	151K0000-1/180	INSULATION,TUBE 24.00 IN LG MAKE FROM MIL-P-15280,FORM T 1-3/8 ID X 1/2 WALL INSULATION TUBING	1
	7	82	PAFZZ	96906	MS35920-17	REDUCER,COUPLING	1
	7	83	PAFZZ	41947 94833	W-2344 50981-6	ELBOW,ST. 90 DEGREES	3
	7	84	MFFZZ	94833	150K0159-3	TUBE,COPPER,STRAIGHT 4.00 IN. LG MAKE FROM ASTM B280,1.125 OD X 0.050 WALL COPPER TUBING	1
	7	85	PAFZZ	70510 94833	1010FY 21058-7	HOSE,ASSEMBLY METAL (SUCTION)	1
	7	86	MFFZZ	60535 94833	FMH-60-18 150K0159-11	TUBE,COPPER,STRAIGHT 13.00 IN. LG MAKE FROM ASTM B280,1.125 OD X 0.050 WALL COPPER TUBING	1
	7	87	PAFZZ	70255 94833 78462	OPR-10-1 1/8 ODF-0-60 500K1854-2 CRO-010-0/60-1	VALVE,PRESSURE REGULATOR	1
	7	88	MFFZZ	94833	151K0043	TUBE,ACCUMULATOR TO REGULATOR 21.13 IN. LG MAKE FROM ASTM B280,1.125 OD X 0.050 WALL COPPER TUBING	1
	7	89	PAFZZ	97765 94833	3700 500K1856-4	ACCUMULATOR	1
	7	90	PAFZZ	97765	983-430	.PLUG,FUSIBLE	1
	7	91	PAFZZ	94833	500K1950-3	WASHER,SPRING LOCK	1
	7	92	PBOZZ	94833	150K0047-1	CHANNEL,MOUNT,ACCUMULATOR	1
	7	93	MFFZZ	94833	150K0196	TUBE,ACCUMULATOR INLET 16.51 IN. LG MAKE FROM ASTM B280,1.125 OD X 0.050 WALL COPPER TUBING	1

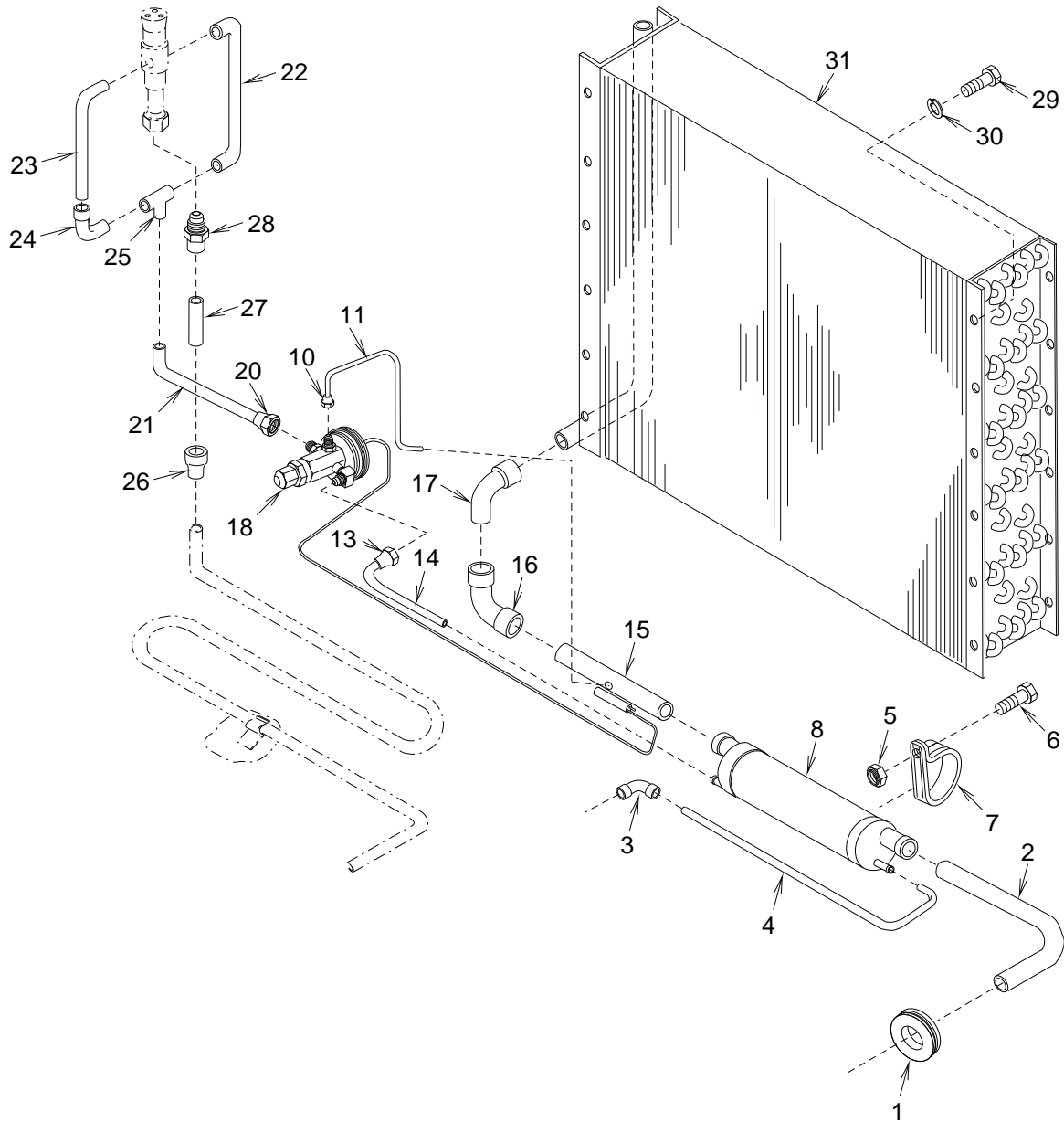
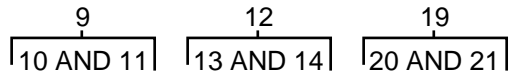


Figure 8. Refrigerant Piping, Evaporator Section

GROUP 04 REFRIGERATION SYSTEM

FIGURE 08 REFRIGERATION PIPING, EVAPORATOR SECTION

PLSN No.	Fig No.	Item No.	SMR Code	CAGE Code	Part Number	Description and Usable On Codes (UOC)	Qty
	8	1	PAFZZ	96906	MS35489-25	GROMMET,RUBBER	1
	8	2	MFFZZ	94833	150K0160	TUBE,SUCTION LINE TO INTERCHANGER 22.77 IN. LG MAKE FROM ASTM B280,1.125 OD X 0.050 WALL COPPER TUBING	1
	8	3	PAFZZ	41947	W-2009	ELBOW,TUBE	1
				97403	13216E6190-2		
	8	4	MFFZZ	94833	150K0202	TUBE,ELBOW TO INTERCHANGER 28.75 IN. LG MAKE FROM ASTM B280,0.375 OD X 0.032 WALL COPPER TUBING	1
	8	5	PAFZZ	94833	500K1927-3	NUT,SELF LOCKING	1
	8	6	PAFZZ	94833	500K1928-19	BOLT,HEX HD	1
	8	7	PAFZZ	96906	MS21919WDG-46	CLAMP,LOOP TYPE,CUSHIONED	1
	8	8	PAFZZ	97765	H300	HEAT,EXCHANGER	1
				94833	500K1853-6		
	8	9	XBFZZ	94833	150K0203-1	TUBE,EXPANSION VALVE EQUALIZER	1
	8	10	PAFZZ	96906	MS35872-2	.NUT,FLARE	1
	8	11	MFFZZ	94833	150K0203-1/T	.TUBE,COPPER 10.27 IN. LG MAKE FROM ASTM B280,0.25 OD X 0.030 WALL COPPER TUBING	1
	8	12	MFFZZ	94833	150K0200-1	TUBE,INTERCHANGER TO EXPANSION VALVE	1
	8	13	PAFZZ	96906	MS35872-3	.NUT,FLARE	1
	8	14	MFFZZ	94833	150K0200-1/T	.TUBE,COPPER 6.60 IN. LG MAKE FROM ASTM B280,0.375 OD X 0.032 WALL COPPER TUBING	1
	8	15	MFFZZ	94833	150K0159-9	TUBE,COPPER,STRAIGHT 7.50 IN. LG MAKE FROM ASTM B280,1.125 OD X 0.050 WALL COPPER TUBING	1
	8	16	PAFZZ	96906	MS35917-9	ELBOW,TUBE,90 DEGREE	1
	8	17	PAFZZ	41947	W-2344	ELBOW,ST. 90 DEGREES	1
				94833	50981-6		
	8	18	PAFZZ	70255	AFAE-1-MC-3/8 X 1/2 SAE	VALVE,EXPANSION	1
				94833	500K1870-2		
				78462	GJE-1/2-C		
				78462	FBJE-1/2-C		
	8	19	XBOZZ	94833	150K0187-1	TUBE,REDUCER TO EXPANSION VALVE	1
	8	20	PAFZZ	96906	MS35872-4	.NUT,FLARE	1
	8	21	MFFZZ	94833	150K0187-1/T	.TUBE,COPPER 7.34 IN. LG MAKE FROM ASTM B280,0.500 OD X 0.032 WALL COPPER TUBING	1
	8	22	MFFZZ	94833	150K0145	TUBE,DISTRIBUTOR TO TEE 15.25 IN. LG MAKE FROM ASTM B280,0.50 OD X 0.032 WALL COPPER TUBING	1
	8	23	MFFZZ	94833	150K0146	TUBE,DISTRIBUTOR TO STREET ELBOW 12.53 IN. LG MAKE FROM ASTM B280,0.50 OD X 0.032 WALL COPPER TUBING	1
	8	24	PAFZZ	96906	MS35928-4	ELBOW,STREET,90 DEGREE	1
	8	25	PAFZZ	41047	W-4015	TEE	1
				97403	13211E4043-29		
	8	26	PAFZZ	96906	MS35923-5	REDUCER,COUPLING	1
	8	27	MFFZZ	94833	150K0197	TUBE,REDUCER TO HALF UNION FLARE 2.00 IN. LG MAKE FROM ASTM B280,0.625 OD X 0.035 WALL COPPER TUBING	1
	8	28	PAFZZ	41947	A-4439	COUPLING	1
				94833	51283-14		

GROUP 04 REFRIGERATION SYSTEM

FIGURE 08 REFRIGERATION PIPING, EVAPORATOR SECTION

PLSN No.	Fig No.	Item No.	SMR Code	CAGE Code	Part Number	Description and Usable On Codes (UOC)	Qty
	8	29	PAFZZ	94833	500K1928-21	BOLT,HEX HEAD	12
	8	30	PAFZZ	94833	500K1950-3	WASHER,SPRING LOCK	12
	8	31	PBFZZ	94833	500K1855-3	EVAPORATOR COIL	1

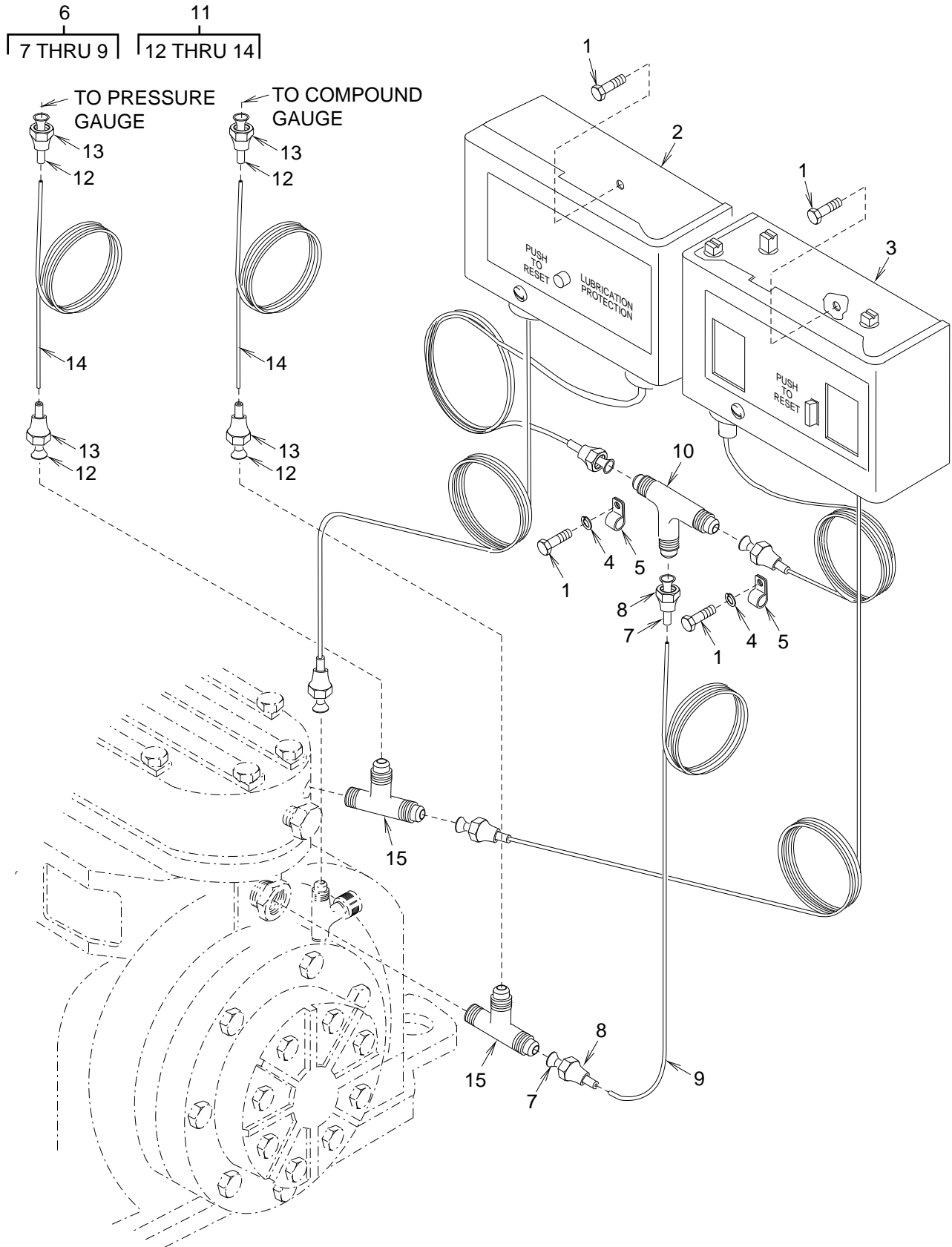


Figure 9. Pressure Switches

GROUP 04 REFRIGERATION SYSTEM

FIGURE 09 PRESSURE SWITCHES

PLSN No.	Fig No.	Item No.	SMR Code	CAGE Code	Part Number	Description and Usable On Codes (UOC)	Qty
	9	1	PAFZZ	94833	500K1928-19	BOLT,HEX HD	6
	9	2	PAFZZ	50831	P45NCA-12	SWITCH,DIFFERENTIAL OIL PRESSURE	1
				94833	500K1907		
	9	3	PAFZZ	50831	P70MA-1G	SWITCH,DUAL PRESSURE CONTROL	1
				94833	500K1901		
	9	4	PAFZZ	94833	500K1950-3	WASHER,SPRING LOCK	2
	9	5	PAFZZ	96906	MS21919WDG-4	CLAMP,LOOP TYPE,CUSHIONED	2
	9	6	XBFZZ	94833	150K0026-5	LINE,CAPILLARY	1
	9	7	MFFZZ	94833	12076-3-1000	.TUBING,COPPER STRAIGHT,FLARED MAKE FROM ASTM B280-.25 OD X .030 ..WALL COPPER TUBING 1.00 IN. LG	2
	9	8	PAFZZ	96833	MS35872-2	.NUT,FLARE	2
	9	9	MFFZZ	94833	150K0206-5/3	.TUBING,COPPER STRAIGHT MAKE FROM ASTM B280-.125 OD X .030 ..WALL COPPER TUBING 3.33 FT LG	1
	9	10	PAFZZ	41947	A-340	TEE,FLARE	1
				94833	53562-1		
	9	11	XBFZZ	94833	150K0026-1	LINE,CAPILLARY	2
	9	12	MFFZZ	94833	12076-3-1000	.TUBING,COPPER STRAIGHT,FLARED MAKE FROM ASTM B280-.25 OD X .030 ..WALL COPPER TUBING 1.00 IN. LG	2
	9	13	PAFZZ	96833	MS35872-2	.NUT,FLARE	2
	9	14	MFFZZ	94833	150K0206-1/3	.TUBING,COPPER STRAIGHT MAKE FROM ASTM B280-.125 OD X .030 ..WALL COPPER TUBING 9 FT LG	1
	9	15	PAFZZ	41947	A-127	TEE	2

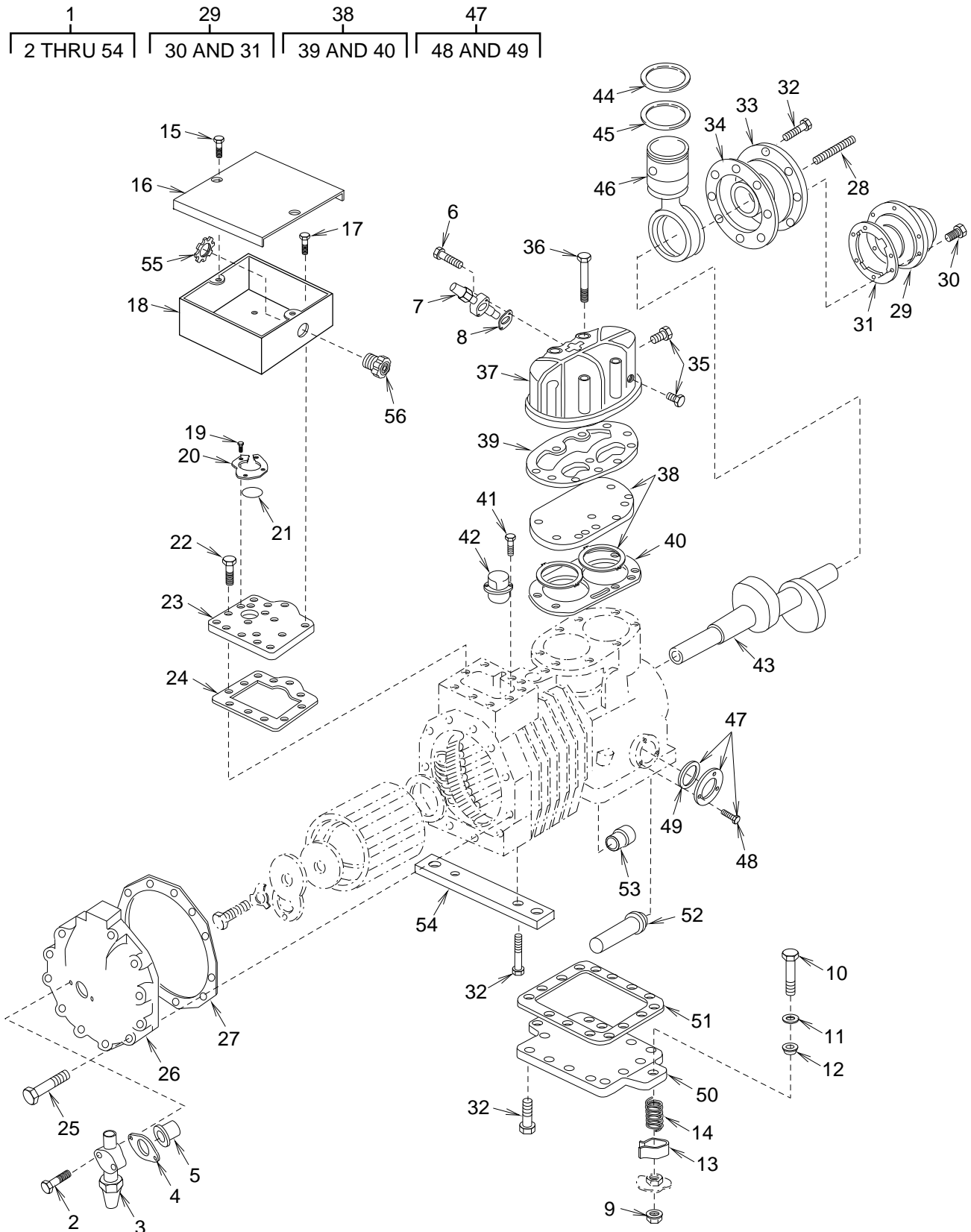


Figure 10. Compressor

GROUP 04 REFRIGERATION SYSTEM

FIGURE 10 COMPRESSOR

PLSN No.	Fig No.	Item No.	SMR Code	CAGE Code	Part Number	Description and Usable On Codes (UOC)	Qty
	10	1	PAFZZ	14569	2DA3-060E-TFC-212	COMPRESSOR, SEMI-HERMETIC	1
				94833	500K1859-2		
	10	2	PAFZZ	14569	100-0013-19	.SCREW-HEX HD CAP	2
	10	3	PAFZZ	14569	510-0068-00	.VALVE-SHUT OFF ASSY	1
	10	4	PAFZZ	14569	020-0012-11	.GASKET-SERVICE VALVE	1
	10	5	PAFZZ	14569	013-0078-00	.SCREEN-SUCTION	1
	10	6	PAFZZ	14569	100-0013-49	.SCREW-HEX HD CAP	2
	10	7	PAFZZ	14569	510-0238-01	.VALVE-SHUT OFF ASSY	1
	10	8	PAFZZ	14569	020-0012-09	.GASKET-SERVICE VALVE	1
	10	9	PAFZZ	14569	101-0006-00	.LOCKNUT-PREV TORQUE TYPE.	4
				94833	500K1859-2-5		
	10	10	PAFZZ	14569	100-0012-07	.SCREW-HEX HD CAP	4
				94833	500K1859-2-4		
	10	11	PAFZZ	94833	500K1926-8	.WASHER, FLAT	4
	10	12	PAFZZ	14569	027-0192-00	.SPACER-RUBBER MOUNTING	4
				94833	500K1859-2-9		
	10	13	PAFZZ	14569	074-0619-01	.BRACKET, SHIPPING	4
				94833	500K1859-2-10		
	10	14	PAFZZ	14569	006-0012-02	.SPRING-COMPRESSOR MOUNTING	4
				94833	500K1859-2-8		
	10	15	PAFZZ	14569	100-0180-02	.SCREW-HEX HD SELF TAPPING	2
	10	16	PAFZZ	14569	505-0173-09	.COVER-TERMINAL ASSY	1
	10	17	PAFZZ	14569	100-0063-02	.SCREW-PAN HD WITH LOCK WASHER	4
	10	18	PAFZZ	14569	062-0058-00	.BOX-TERMINAL	1
	10	19	PAFZZ	14569	100-0013-02	.SCREW-HEX HD CAP	3
	10	20	PAFZZ	14569	521-0018-00	.TERMINAL-FUSED CLUSTER	1
	10	21	PAFZZ	14569	020-0844-00	.SEAL-FUSED CLUSTER	1
	10	22	PAFZZ	14569	100-0077-18	.SCREW-HEX HD CAP	10
	10	23	PAFZZ	14569	503-0346-01	.PLATE-TERMINAL GROUP	1
	10	24	PAFZZ	14569	020-0146-00	.GASKET-TERM MTG PLATE	1
	10	25	PAFZZ	14569	100-0012-26	.SCREW-HEX HD CAP	16
	10	26	PAFZZ	14569	005-0650-00	.COVER-STATOR	1
	10	27	PAFZZ	14569	020-0709-00	.GASKET-STATOR COVER	1
	10	28	PAFZZ	14569	103-0025-07	.STUD	2
	10	29	PAFZZ	14569	509-0034-10	.PUMP-OIL GROUP	1
	10	30	PAFZZ	14569	100-0013-20	.SCREW-HEX HD CAP	6
	10	31	PAFZZ	14569	020-0732-00	.GASKET-OIL PUMP	1
	10	32	PAFZZ	14569	100-0182-02	.SCREW-HEX WASH HD	29
	10	33	PAFZZ	14569	505-0360-00	.COVER-HOUSING BRG ASSEMBLY	1
	10	34	PAFZZ	14569	020-0104-00	.GASKET-HOUSING COVER	1
	10	35	PAFZZ	14569	036-0008-02	.FITTING-PIPE PLUG	2
	10	36	PAFZZ	14569	100-0062-52	.SCREW-HEX HD CAP	8
	10	37	PAFZZ	14569	002-0339-00	.HEAD-CYLINDER	1
	10	38	PAFZZ	14569	503-0423-03	.PLATE-VALVE ASSEMBLY	1
	10	39	PAFZZ	14569	020-0756-00	.GASKET-CYLINDER HEAD	1
	10	40	PAFZZ	14569	020-0757-04	.GASKET-VALVE PLATE	1
	10	41	PAFZZ	14569	100-0028-04	.SCREW-HEX HD CAP WITH LOCK WASHER	2
	10	42	PAFZZ	14569	071-0429-08	.PROTECTOR	1
	10	43	PAFZZ	14569	007-0107-03	.CRANKSHAFT	1
	10	44	PAFZZ	14569	025-0002-35	.RING PISTON	2
	10	45	PAFZZ	14569	025-0088-35	.RING PISTON	2
	10	46	PAFZZ	14569	504-0217-00	.PISTON-PIN & ROD ASSY	2
	10	47	PAFZZ	14569	570-0020-00	.GLASS-SIGHT GROUP	1
	10	48	PAFZZ	14569	100-0028-05	.SCREW-HEX HD CAP	3
	10	49	PAFZZ	14569	020-0844-01	.SEAL	1
	10	50	PAFZZ	14569	003-0099-00	.PLATE-BOTTOM	1
	10	51	PAFZZ	14569	020-0159-00	.GASKET-BOTTOM PLATE	1
	10	52	PAFZZ	14569	013-0084-00	.SCREEN-STRAINER	1
	10	53	PAFZZ	14569	510-0142-00	.VALVE-OIL CHECK ASSY	1



GROUP 04 REFRIGERATION SYSTEM

FIGURE 10 COMPRESSOR

PLSN No.	Fig No.	Item No.	SMR Code	CAGE Code	Part Number	Description and Usable On Codes (UOC)	Qty
	10	54	PAFZZ	14569	003-0060-00	.PLATE-MOUNTING FOOT	1
	10	55	PAFZZ	24624	5054520-3	LOCKNUT, CONDUIT	1
				59730	142		
	10	56	PAFZZ	24624	5054519-9	BUSHING, STRAIN RELIEF, CABLE	1
				59730	2535		

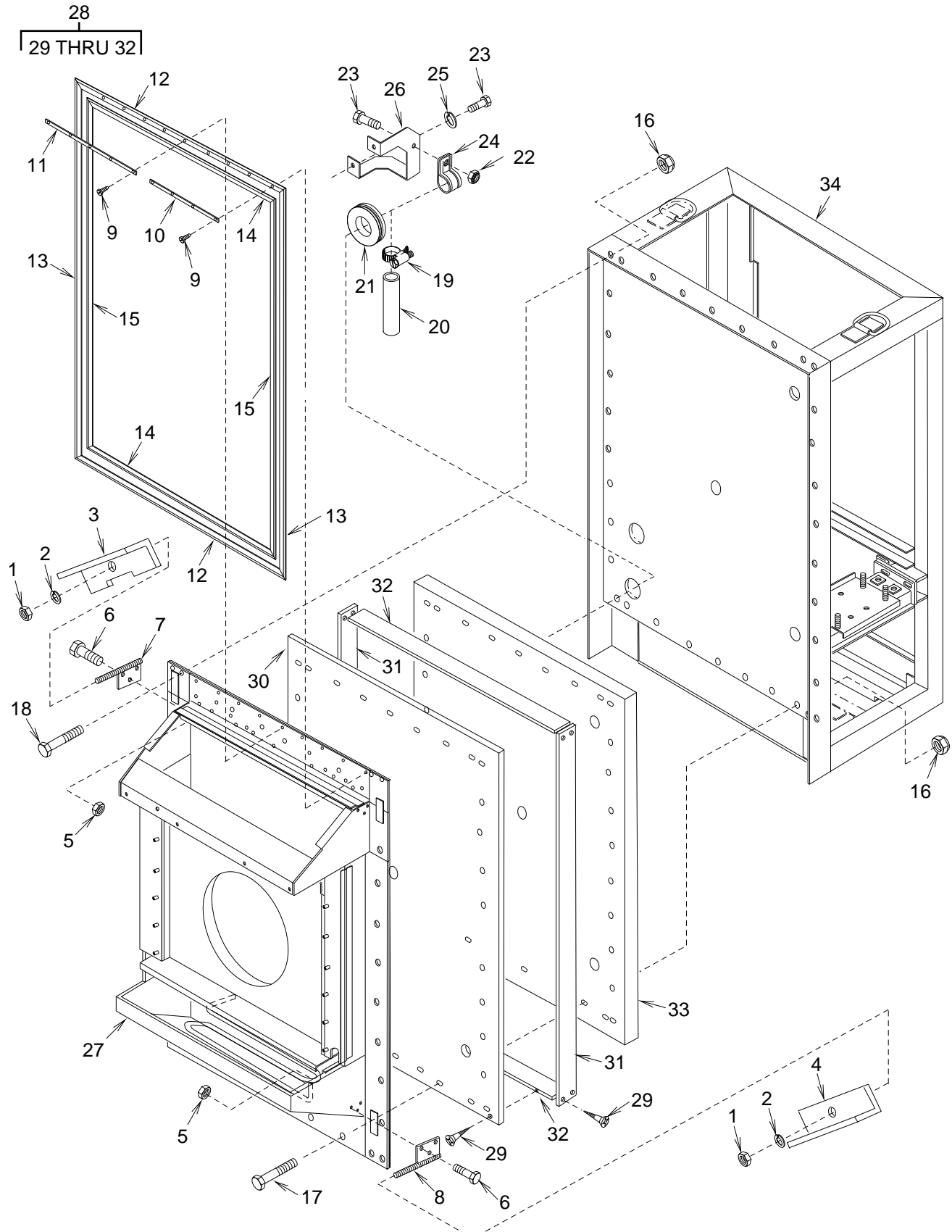


Figure 11. Heat Shield, Evaporator Housing, and Condenser Frame

## FIGURE 11 HEAT SHIELD AND EVAPORATOR HOUSING

PLSN No.	Fig No.	Item No.	SMR Code	CAGE Code	Part Number	Description and Usable On Codes (UOC)	Qty
	11	1	PAOZZ	94833	53578-12	NUT,PLAIN HEX	4
	11	2	PAOZZ	94833	500K1950-10	WASHER,SPRING LOCK	4
	11	3	XBOZZ	94833	150K0204-1	ANGLE,UNIT MOUNTING	2
	11	4	XBOZZ	94833	150K0204-3	ANGLE,UNIT MOUNTING	2
	11	5	PAOZZ	94833	500K1927-6	NUT,SELF LOCKING	12
	11	6	PAOZZ	94833	500K1928-58	BOLT,HEX HD	12
	11	7	PAOZZ	94833	72948-1	MOUNT,UNIT	2
	11	8	PAOZZ	94833	72948-2	MOUNT,UNIT	2
	11	9	PAOZZ	96906	MS51850-54	SCREW,TAPPING	84
	11	10	XBOZZ	94833	150K0168-1	STRIP,GASKET RETAINER	16
	11	11	XBOZZ	94833	150K0168-3	STRIP,GASKET RETAINER	4
	11	12	MOOZZ	94833	150K0171	GASKET,TOP AND BOTTOM	2
					MAKE FROM (74951) V-1234-100,43.75 IN. LG		
	11	13	MOOZZ	94833	150K0170	GASKET,SIDE	2
					MAKE FROM (74951) V-1234-100,62.06 IN. LG		
	11	14	MOOZZ	94833	150K0172	GASKET,TOP AND BOTTOM	2
					MAKE FROM (74951) V-1234-100,39.25 IN. LG		
	11	15	MOOZZ	94833	150K0169	GASKET,SIDE	2
					MAKE FROM (74951) V-1234-100,57.59 IN. LG		
	11	16	PAOZZ	94833	500K1927-4	NUT,SELF LOCKING	34
	11	17	PAOZZ	94833	53573-4-64	SCREW,CAP,HEX HEAD	30
	11	18	PAOZZ	94833	53573-4-68	SCREW,CAP,HEX HEAD	4
	11	19	PAOZZ	96906	MS35842-11	CLAMP,HOSE	1
	11	20	MFFZZ	97403	13218E0001-305	TUBING,PLASTIC 8.00 IN LG	1
					MAKE FROM ZZ-T-831,TYPE VI,CLASS 6 0.75 ID X 0.125 WALL		
	11	21	PAOZZ	96906	MS35489-28	GROMMET,RUBBER	1
	11	22	PAOZZ	94833	500K1927-3	NUT,SELF LOCKING	1
	11	23	PAOZZ	94833	500K1928-19	BOLT,HEX HD	3
	11	24	PAOZZ	96906	MS21919WDG-10	CLAMP,LOOP TYPE,CUSHIONED	1
	11	25	PAOZZ	94833	500K1950-3	WASHER,SPRING LOCK	2
	11	26	XBOZZ	94833	150K0190-1	BRACKET,DEFROST TUBE	1
	11	27	XBFZZ	94833	150K0011-1	HOUSING,EVAPORATOR	1
	11	28	XBFZZ	94833	150K0073-1	FRAME,HEAT SHIELD	1
	11	29	XBFZZ	94833	53581-8-24	.SCREW,WOOD,FLAT HEAD	42
	11	30	XBFZZ	94833	150K0074	.PANEL,HEAT SHIELD	1
	11	31	XBFZZ	94833	150K0075-1	.BEAM,HEAT SHIELD	2
	11	32	XBFZZ	94833	150K0075-3	.BEAM,HEAT SHIELD	2
	11	33	XBFZZ	94833	150K0100	INSULATION,HEAT SHIELD	1
	11	34	XBFZZ	94833	151K0040-1	FRAME,CONDENSER	1

F10000RE NUMERICAL INDEX

PART NUMBER ORDER EFFECTIVE 12 July 1995

PLSN No.	Fig No.	Item No.	SMR Code	CAGE Code	Part Number	Description and Usable On Codes (UOC)	Qty
	7	58				.COIL,SOLENOID	1
	10	37	PAFZZ	14569	002-0339-00	.HEAD-CYLINDER	1
	10	1	PAFZZ	14569	2DA3060E-TFC-200	COMPRESSOR,SEMI-HERMETIC	1
				94833	500K1859-2		
	10	53	PAFZZ	14569	003-0060-00	.PLATE-MOUNTING FOOT	1
	10	47	PAFZZ	14569	003-0099-00	.PLATE-BOTTOM	1
	10	26	PAFZZ	14569	005-0650-00	.COVER-STATOR	1
	7	30	XBFZZ	81337	5-13-5421	.PLATE,DANGER	2
	10	11	PAFZZ	14569	006-0012-02	.SPRING-COMPRESSOR MOUNTING	4
				94833	500K1859-2-8		
	10	43	PAFZZ	14569	007-0107-03	.CRANKSHAFT	1
	10	5	PAFZZ	14569	013-0078-00	.SCREEN-SUCTION	1
	10	49	PAFZZ	14569	013-0084-00	.SCREEN-STRAINER	1
	10	8	PAFZZ	14569	020-0012-09	.GASKET-SERVICE VALVE	1
	10	4	PAFZZ	14569	020-0012-11	.GASKET-SERVICE VALVE	1
	10	34	PAFZZ	14569	020-0104-00	.GASKET-HOUSING COVER	1
	10	24	PAFZZ	14569	020-0146-00	.GASKET-TERM MTG PLATE	1
	10	48	PAFZZ	14569	020-0159-00	.GASKET-BOTTOM PLATE	1
	10	27	PAFZZ	14569	020-0709-00	.GASKET-STATOR COVER	1
	10	30	PAFZZ	14569	020-0732-00	.GASKET-OIL PUMP	1
	10	39	PAFZZ	14569	020-0756-00	.GASKET-CYLINDER HEAD	1
	10	40	PAFZZ	14569	020-0757-04	.GASKET-VALVE PLATE	1
	10	21	PAFZZ	14569	020-0844-00	.SEAL-FUSED CLUSTER	1
	10	44	PAFZZ	14569	025-0002-35	.RING PISTON	2
	10	44	PAFZZ	14569	025-0088-35	.RING PISTON	2
	10	10	PAFZZ	14569	027-0192-00	.SPACER-RUBBER MOUNTING	4
				94833	500K1859-2-9		
	10	35	PAFZZ	14569	036-0008-02	.FITTING-PIPE PLUG	2
	4	46	PAOZZ	81349	39TB2	.TERMINAL BOARD	1
				81349	MIL-T-55164/3		
	10	18	PAFZZ	14569	062-0058-00	.BOX-TERMINAL	1
	10	42	PAFZZ	14569	071-0429-08	.PROTECTOR	1
	10	14	PAFZZ	14569	100-0012-07	.SCREW-HEX HD CAP	4
				94833	500K1859-2-4		
	10	25	PAFZZ	14569	100-0012-26	.SCREW-HEX HD CAP	16
	10	19	PAFZZ	14569	100-0013-02	.SCREW-HEX HD CAP	3
	10	2	PAFZZ	14569	100-0013-19	.SCREW-HEX HD CAP	2
	10	31	PAFZZ	14569	100-0013-20	.SCREW-HEX HD CAP	6
	10	6	PAFZZ	14569	100-0013-49	.SCREW-HEX HD CAP	2
	10	41	PAFZZ	14569	100-0028-04	.SCREW-HEX HD CAP WITH LOCK WASHER	2
	10	51	PAFZZ	14569	100-0062-46	.SCREW-HEX HD CAP	2
	10	36	PAFZZ	14569	100-0062-52	.SCREW-HEX HD CAP	8
	10	17	PAFZZ	14569	100-0063-02	.SCREW-PAN HD WITH LOCK WASHER	4
	10	22	PAFZZ	14569	100-0077-18	.SCREW-HEX HD CAP	10
	10	15	PAFZZ	14569	100-0180-02	.SCREW-HEX HD SELF TAPPING	2
	10	32	PAFZZ	14569	100-0182-02	.SCREW-HEX WASH HD	27
	10	12	PAFZZ	14569	101-0001-12	.NUT-HEXAGON	4
	10	9	PAFZZ	14569	101-0006-00	.LOCKNUT-PREV TORQUE TYPE.	4
				94833	500K1859-2-5		
	10	52	PAFZZ	14569	102-0010-08	.WASHER-LOCK SPRING TYPE	2
	10	13	PAFZZ	14569	102-0010-11	.WASHER-LOCK SPRING TYPE	4
				94833	500K1859-2-7		
	10	28	PAFZZ	14569	103-0025-07	.STUD	2
	4	56	XBOZZ	94833	120K1472	.NAMEPLATE,GAGES	1
	1	17	PAOZZ	94833	120K1489	PLATE,IDENTIFICATION	1
	5	15	XBOZZ	94833	120K1504-1	.PLATE,ELECTRICAL OPERATION	1
	5	16	XBOZZ	94833	120K1504-3	.PLATE,ELECTRICAL OPERATION	1
	1	18	XBOZZ	94833	120K1521	PLATE,WARRANTY	1
	4	11	PAOZZ	92966	120MB	.LAMP,MINIATURE	1
				94833	500K1892-3		

F10000RE NUMERICAL INDEX

PART NUMBER ORDER EFFECTIVE 12 July 1995

PLSN No.	Fig No.	Item No.	SMR Code	CAGE Code	Part Number	Description and Usable On Codes (UOC)	Qty
	4	10	PAOZZ	83330	125-1131-403	.CAP,INDICATOR (RED)	1
				94833	500K1891-1		
	4	12	PAOZZ	83330	125-1310-11-103	.BASE,INDICATOR	1
				94833	500K1890		
	5	7	XBOZZ	94833	149K0018-1	ENCLOSURE ASSEMBLY	1
	5	17	XBOZZ	94833	149K0020-1	.ENCLOSURE	1
	11	27	XBFZZ	94833	150K0011-1	HOUSING,EVAPORATOR	1
	9	11	XBFZZ	94833	150K0026-1	LINE,CAPILLARY	2
	9	6	XBFZZ	94833	150K0026-5	LINE,CAPILLARY	1
	1	8	XBOZZ	94833	150K0036	GUARD,COIL	1
	1	11	XBOZZ	94833	150K0038	SHIM	8
	7	90	PBOZZ	94833	150K0047-1	CHANNEL,MOUNT,ACCUMULATOR	1
	11	28	XBFZZ	94833	150K0073-1	FRAME,HEAT SHIELD	1
	11	30	XBFZZ	94833	150K0074	.PANEL,HEAT SHIELD	1
	11	31	XBFZZ	94833	150K0075-1	.BEAM,HEAT SHIELD	2
	11	32	XBFZZ	94833	150K0075-3	.BEAM,HEAT SHIELD	2
	7	27	XBFZZ	94833	150K0083-1	SHROUD,CONDENSER	1
	1	28	XBOZZ	94833	150K0092-1	POST,CENTER	1
	4	50	MFFZZ	94833	150K0096	.GASKET,CONTROL BOX,SIDE MAKE FROM ASTM D1056-2A2C2F2,1/8 X 1/2 X 6-27/32	2
	7	47	PBOZZ	94833	150K0098	BRACKET,HAND VALVE	1
	11	33	XBFZZ	94833	150K0100	INSULATION,HEAT SHIELD	1
	6	12	XBOZZ	94833	150K0101-1	SUPPORT,BEARING FLANGE-CONDENSER FAN END	1
	7	10	PBOZZ	94833	150K0113	BRACKET,FILTER DRIER	1
	1	24	XBOZZ	94833	150K0121-1	DOOR,FRONT BOTTOM	2
	1	23	XBOZZ	94833	150K0127-1	GUARD,CONDENSER	1
	1	3	XBOZZ	94833	150K0133	PANEL, TOP, CONDENSER	1
	1	13	XBOZZ	94833	150K0136-1	DOOR,SIDE CONDENSER	1
	1	14	XBOZZ	94833	150K0136-2	DOOR,SIDE CONDENSER	1
	2	7	XBOZZ	94833	150K0144-4	BRACKET,SENSING BULB	1
	8	22	MFFZZ	94833	150K0145	TUBE,DISTRIBUTOR TO TEE 15.25 IN. LG	1
					MAKE FROM ASTM B280,0.50 OD X 0.032 WALL COPPER TUBING		
	8	23	MFFZZ	94833	150K0146	TUBE,DISTRIBUTOR TO STREET ELBOW 12.53 IN. LG	1
					MAKE FROM ASTM B280,0.50 OD X 0.032 WALL COPPER TUBING		
	1	7	XBOZZ	94833	150K0154	GUARD,EVAPORATOR AIR OUTLET	1
	7	85	MFFZZ	94833	150K0159-11	TUBE,COPPER,STRAIGHT 13.00 IN. LG MAKE FROM ASTM B280,1.125 OD X 0.050 WALL COPPER TUBING	1
	7	83	MFFZZ	94833	150K0159-3	TUBE,COPPER,STRAIGHT 4.00 IN. LG MAKE FROM ASTM B280,1.125 OD X 0.050 WALL COPPER TUBING	1
	8	15	MFFZZ	94833	150K0159-9	TUBE,COPPER,STRAIGHT 7.50 IN. LG MAKE FROM ASTM B280,1.125 OD X 0.050 WALL COPPER TUBING	1
	8	2	MFFZZ	94833	150K0160	TUBE,SUCTION LINE TO INTERCHANGER	1
	7	37	MFFZZ	94833	150K0161-1	TUBE,COPPER,STRAIGHT 26.38 IN. LG MAKE FROM ASTM B280,0.875 OD X 0.045 WALL COPPER TUBING	1
	7	43	MFFZZ	94833	150K0161-3	TUBE,COPPER,STRAIGHT 3.75 IN. LG MAKE FROM ASTM B280,0.875 OD X 0.045 WALL COPPER TUBING	1
	11	10	XBOZZ	94833	150K0168-1	STRIP,GASKET RETAINER	16
	11	11	XBOZZ	94833	150K0168-3	STRIP,GASKET RETAINER	4

F10000RE NUMERICAL INDEX

PART NUMBER ORDER EFFECTIVE 12 July 1995

PLSN No.	Fig No.	Item No.	SMR Code	CAGE Code	Part Number	Description and Usable On Codes (UOC)	Qty
	11	15	MOOZZ	94833	150K0169	GASKET,SIDE MAKE FROM (74951) V-1234-100,57.59 IN. LG	2
	11	13	MOOZZ	94833	150K0170	GASKET,SIDE MAKE FROM (74951) V-1234-100,62.06 IN. LG	2
	11	12	MOOZZ	94833	150K0171	GASKET, TOP AND BOTTOM MAKE FROM (74951) V-1234-100,43.75 IN. LG	2
	11	14	MOOZZ	94833	150K0172	GASKET, TOP AND BOTTOM MAKE FROM (74951) V-1234-100,39.25 IN. LG	2
	1	19	XBOZZ	94833	150K0173-1	COVER, CONTROL PANEL	1
	1	21	MFFZZ	94833	150K0175-1	.GASKET, DOOR (3/16 X 7/8 X 8) MAKE FROM ASTM D1056-2A2C2F2	2
	1	22	MFFZZ	94833	150K0175-3	.GASKET, DOOR (3/16 X 7/8 X 32-11/16) MAKE FROM ASTM D1056-2A2C2F2	1
	1	20	MFFZZ	94833	150K0175-5	.GASKET, DOOR (1/8 X 27/32 X 34-3/4) MAKE FROM ASTM D1056-2A2C2F2	1
	1	26	XBOZZ	94833	150K0180	CLIP, DOOR HOLDER	2
	4	35	XBOZZ	94833	150K0183	.DUMMY STOWAGE CONNECTOR	1
	8	19	XBOZZ	94833	150K0187-1	TUBE, REDUCER TO EXPANSION VALVE	1
	8	21	MFFZZ	94833	150K0187-1/T	.TUBE, COPPER 7.34 IN. LG MAKE FROM ASTM B280, 0.500 OD X 0.032 WALL COPPER TUBING	1
	11	26	XBOZZ	94833	150K0190-1	BRACKET, DEFROST TUBE	1
	7	91	MFFZZ	94833	150K0196	TUBE, ACCUMULATOR INLET 16.51 IN. LG MAKE FROM ASTM B280, 1.125 OD X 0.050 WALL COPPER TUBING	1
	8	27	MFFZZ	94833	150K0197	TUBE, REDUCER TO HALF UNION FLARE 2.00 IN. LG MAKE FROM ASTM B280, 0.625 OD X 0.035 WALL COPPER TUBING	1
	7	70	MFFZZ	94833	150K0198-13	TUBE, STRAIGHT, FLARE ONE END	1
	7	71	MFFZZ	94833	150K0198-3	TUBE, STRAIGHT, FLARE ONE END 2.00 IN. LG MAKE FROM ASTM B280, 0.375 OD X 0.032 WALL COPPER TUBING	1
	7	72	MFFZZ	94833	150K0198-5	TUBE, STRAIGHT, FLARE ONE END 2.25 IN. LG MAKE FROM ASTM B280, 0.375 OD X 0.032 WALL COPPER TUBING	1
	7	59	MFFZZ	94833	150K0198-7	TUBE, STRAIGHT, FLARE ONE END	1
	8	12	MFFZZ	94833	150K0200-1	TUBE, INTERCHANGER TO EXPANSION VALVE	1
	8	14	MFFZZ	94833	150K0200-1/T	.TUBE, COPPER 6.60 IN. LG MAKE FROM ASTM B280, 0.375 OD X 0.032 WALL COPPER TUBING	1
	4	42	XBOZZ	94833	150K0201-1	.STRAP, GROUND	1
	4	45	MOOZZ	94833	150K0201-1/1	..BRAID, WIRE, TUBULAR MAKE FROM QQ-B-575/R30T281, 4.00 IN. LG	1
	4	44	MOOZZ	94833	150K0201-1/3	..INSULATION, SLEEVING MAKE FROM M23053/5-107-0, 4.00 IN. LG	1
	8	4	MFFZZ	94833	150K0202	TUBE, ELBOW TO INTERCHANGER 28.75 IN. LG MAKE FROM ASTM B280, 0.375 OD X 0.032 WALL COPPER TUBING	1
	8	9	XBFZZ	94833	150K0203-1	TUBE, EXPANSION VALVE EQUALIZER	1

F10000RE NUMERICAL INDEX

PART NUMBER ORDER EFFECTIVE 12 July 1995

PLSN No.	Fig No.	Item No.	SMR Code	CAGE Code	Part Number	Description and Usable On Codes (UOC)	Qty
	8	11	MFFZZ	94833	150K0203-1/T	. TUBE,COPPER 10.27 IN. LG MAKE FROM ASTM B280,0.25 OD X 0.030 WALL COPPER TUBING	1
	11	3	XBOZZ	94833	150K0204-1	ANGLE,UNIT MOUNTING	2
	11	4	XBOZZ	94833	150K0204-3	ANGLE,UNIT MOUNTING	2
	9	14	MFFZZ	94833	150K0206-1/3	.TUBING,COPPER STRAIGHT MAKE FROM ASTM B280-.125 OD X .030 ..WALL COPPER TUBING 9 FT LG	1
	9	9	MFFZZ	94833	150K0206-5/3	.TUBING,COPPER STRAIGHT MAKE FROM ASTM B280-.125 OD X .030 ..WALL COPPER TUBING 3.33 FT LG	1
	1	15	XBOZZ	94833	150K0207	SHIM	2
	7	79	MFFZZ	94833	151K0000-1/179	INSULATION,TUBE _____LG MAKE FROM MIL-P-15280,FORM T 1-1/8 ID X 1/2 WALL INSULATION TUBING	1
	7	80	MFFZZ	94833	151K0000-1/180	INSULATION,TUBE _____LG MAKE FROM MIL-P-15280,FORM T 3-1/8 ID X 1/2 WALL INSULATION TUBING	1
	5	21	MOOZZ	94833	151K0000-1/204	INSULATION,SLEEVING MAKE FROM M23053/5-106-9,1.50 IN. LG	2
	5	22	MOOZZ	94833	151K0000-1/205	INSULATION,SLEEVING MAKE FROM M23053/5-107-9,1.50 IN. LG	2
	2	14	XBOZZ	94833	151K0009-1	CONTROL BOX ASSEMBLY	1
	4	23	MFFZZ	94833	151K0009-1/54	. INSULATION,SLEEVING MAKE FROM M23053/5-107-9,0.88 IN. LG	5
	4	51	XBOZZ	94833	151K0010	.COVER,CONTROL BOX	1
	4	57	XBOZZ	94833	151K0017-1	.CONTROL BOX	1
	4	6	XBOZZ	94833	151K0018	.COVER,CIRCUIT BREAKER	1
	4	33	XBOZZ	94833	151K0020	.BRACKET,TEMPERATURE CONTROL SWITCH	1
	3	3	XBOZZ	94833	151K0021-1	.WIRE LEAD	1
	3	5	MOOZZ	94833	151K0021-1/1	..WIRE,ELEC MAKE FROM M5086/2-12-9,24 IN.LG	1
	3	21	XBOZZ	94833	151K0021-10 TO 13	.CABLE	1
	3	25	MOOZZ	94833	151K0021-10/13	..CABLE MAKE FROM 500K1915-3,100 IN.LG	1
	3	26	XBOZZ	94833	151K0021-14	.WIRE LEAD	1
	3	28	MOOZZ	94833	151K0021-14/3	..WIRE,ELEC MAKE FROM M5086/2-18-9,30 IN.LG	1
	3	29	MOOZZ	94833	151K0021-15	.WIRE LEAD MAKE FROM M5086/2-18-9,12 IN.LG	1
	3	30	XBOZZ	94833	151K0021-16	.WIRE LEAD	1
	3	32	MOOZZ	94833	151K0021-16/3	..WIRE,ELEC MAKE FROM M5086/2-18-9,12 IN.LG	1
	3	33	XBOZZ	94833	151K0021-17	.WIRE LEAD	1
	3	35	MOOZZ	94833	151K0021-17/3	..WIRE,ELEC MAKE FROM M5086/2-18-9,106 IN.LG	1
	3	36	XBOZZ	94833	151K0021-18	.WIRE LEAD	1
	3	38	MOOZZ	94833	151K0021-18/3	..WIRE,ELEC MAKE FROM M5086/2-18-9,104 IN.LG	1
	3	39	XBOZZ	94833	151K0021-19 TO 22	.CABLE	1
	3	43	MOOZZ	94833	151K0021-19/14	..CABLE MAKE FROM 500K1915-1,102 IN.LG	1
	3	6	XBOZZ	94833	151K0021-2	.WIRE LEAD	1
	3	8	MOOZZ	94833	151K0021-2/1	..WIRE,ELEC MAKE FROM M5086/2-12-9,24 IN.LG	1
	3	44	XBOZZ	94833	151K0021-23	.WIRE LEAD	1

F10000RE NUMERICAL INDEX

PART NUMBER ORDER EFFECTIVE 12 July 1995

PLSN No.	Fig No.	Item No.	SMR Code	CAGE Code	Part Number	Description and Usable On Codes (UOC)	Qty
	3	46	MOOZZ	94833	151K0021-23/3	. . WIRE, ELEC MAKE FROM M5086/2-18-9, 24 IN. LG	1
	3	47	XBOZZ	94833	151K0021-24	. WIRE LEAD	1
	3	49	MOOZZ	94833	151K0021-24/3	. . WIRE, ELEC MAKE FROM M5086/2-18-9, 12 IN. LG	1
	3	50	XBOZZ	94833	151K0021-25	. WIRE LEAD	1
	3	53	MOOZZ	94833	151K0021-25/3	. . WIRE, ELEC MAKE FROM M5086/2-18-9, 120 IN. LG	1
	3	54	XBOZZ	94833	151K0021-26	. WIRE LEAD	1
	3	57	MOOZZ	94833	151K0021-26/3	. . WIRE, ELEC MAKE FROM M5086/2-18-9, 24 IN. LG	1
	3	58	XBOZZ	94833	151K0021-27	. WIRE LEAD	1
	3	60	MOOZZ	94833	151K0021-27/3	. . WIRE, ELEC MAKE FROM M5086/2-18-9, 12 IN. LG	1
	3	61	XBOZZ	94833	151K0021-28	. WIRE LEAD	1
	3	65	MOOZZ	94833	151K0021-28/3	. . WIRE, ELEC MAKE FROM M5086/2-18-9, 120 IN. LG	1
	3	66	XBOZZ	94833	151K0021-29	. WIRE LEAD	1
	3	68	MOOZZ	94833	151K0021-29/3	. . WIRE, ELEC MAKE FROM M5086/2-18-9, 108 IN. LG	1
	3	9	XBOZZ	94833	151K0021-3	. WIRE LEAD	1
	3	11	MOOZZ	94833	151K0021-3/1	. . WIRE, ELEC MAKE FROM M5086/2-12-9, 24 IN. LG	1
	3	69	XBOZZ	94833	151K0021-30	. WIRE LEAD	1
	3	73	MOOZZ	94833	151K0021-30/3	. . WIRE, ELEC MAKE FROM M5086/2-18-9, 120 IN. LG	1
	3	74	XBOZZ	94833	151K0021-31	. WIRE LEAD	1
	3	76	MOOZZ	94833	151K0021-31/3	. . WIRE, ELEC MAKE FROM M5086/2-18-9, 106 IN. LG	1
	3	76	XBOZZ	94833	151K0021-32	. WIRE LEAD	1
	3	79	MOOZZ	94833	151K0021-32/3	. . WIRE, ELEC MAKE FROM M5086/2-18-9, 12 IN. LG	1
	3	80	XBOZZ	94833	151K0021-33	. WIRE LEAD	1
	3	83	MOOZZ	94833	151K0021-33/3	. . WIRE, ELEC MAKE FROM M5086/2-18-9, 24 IN. LG	1
	3	84	XBOZZ	94833	151K0021-34	. WIRE LEAD	1
	3	86	MOOZZ	94833	151K0021-34/3	. . WIRE, ELEC MAKE FROM M5086/2-18-9, 12 IN. LG	1
	3	87	XBOZZ	94833	151K0021-35	. WIRE LEAD	1
	3	89	MOOZZ	94833	151K0021-35/3	. . WIRE, ELEC MAKE FROM M5086/2-18-9, 3 IN. LG	1
	3	90	XBOZZ	94833	151K0021-36	. WIRE LEAD	1
	3	93	MOOZZ	94833	151K0021-36/3	. . WIRE, ELEC MAKE FROM M5086/2-18-9, 24 IN. LG	1
	3	94	XBOZZ	94833	151K0021-37	. WIRE LEAD	1
	3	97	MOOZZ	94833	151K0021-37/3	. . WIRE, ELEC MAKE FROM M5086/2-18-9, 12 IN. LG	1
	3	98	XBOZZ	94833	151K0021-38	. WIRE LEAD	1
	3	101	MOOZZ	94833	151K0021-38/3	. . WIRE, ELEC MAKE FROM M5086/2-18-9, 12 IN. LG	1
	3	102	XBOZZ	94833	151K0021-39	. WIRE LEAD	1
	3	104	MOOZZ	94833	151K0021-39/3	. . WIRE, ELEC MAKE FROM M5086/2-18-9, 24 IN. LG	1
	3	12	MOOZZ	94833	151K0021-4	. WIRE LEAD MAKE FROM M5086/2-14-9, 12 IN. LG	1
	3	105	XBOZZ	94833	151K0021-40	. WIRE LEAD	1
	3	109	MOOZZ	94833	151K0021-40/3	. . WIRE, ELEC MAKE FROM M5086/2-18-9, 120 IN. LG	1
	3	110	XBOZZ	94833	151K0021-41	. WIRE LEAD	1



F10000RE NUMERICAL INDEX

PART NUMBER ORDER EFFECTIVE 12 July 1995

PLSN No.	Fig No.	Item No.	SMR Code	CAGE Code	Part Number	Description and Usable On Codes (UOC)	Qty
	3	114	MOOZZ	94833	151K0021-41/3	. . WIRE, ELEC MAKE FROM M5086/2-18-9, 113 IN. LG	1
	3	115	XBOZZ	94833	151K0021-42	. WIRE LEAD	1
	3	117	MOOZZ	94833	151K0021-42/3	. . WIRE, ELEC MAKE FROM M5086/2-18-9, 12 IN. LG	1
	3	118	XBOZZ	94833	151K0021-43	. WIRE LEAD	1
	3	120	MOOZZ	94833	151K0021-43/3	. . WIRE, ELEC MAKE FROM M5086/2-18-9, 12 IN. LG	1
	3	121	XBOZZ	94833	151K0021-44	. WIRE LEAD	1
	3	124	MOOZZ	94833	151K0021-44/3	. . WIRE, ELEC MAKE FROM M5086/2-18-9, 12 IN. LG	1
	3	125	XBOZZ	94833	151K0021-45	. WIRE LEAD	1
	3	129	MOOZZ	94833	151K0021-45/3	. . WIRE, ELEC MAKE FROM M5086/2-18-9, 100 IN. LG	1
	3	130	XBOZZ	94833	151K0021-46	. WIRE LEAD	1
	3	132	MOOZZ	94833	151K0021-46/3	. . WIRE, ELEC MAKE FROM M5086/2-18-9, 12 IN. LG	1
	3	133	XBOZZ	94833	151K0021-47	. WIRE LEAD	1
	3	137	MOOZZ	94833	151K0021-47/3	. . WIRE, ELEC MAKE FROM M5086/2-18-9, 120 IN. LG	1
	3	138	XBOZZ	94833	151K0021-48	. WIRE LEAD	1
	3	140	MOOZZ	94833	151K0021-48/3	. . WIRE, ELEC MAKE FROM M5086/2-18-9, 20 IN. LG	1
	3	141	XBOZZ	94833	151K0021-49	. WIRE LEAD	1
	3	143	MOOZZ	94833	151K0021-49/1	. . WIRE, ELEC MAKE FROM M5086/2-12-9, 12 IN. LG	1
	3	13	MOOZZ	94833	151K0021-5	. WIRE LEAD MAKE FROM M5086/2-14-9, 12 IN. LG	1
	3	144	XBOZZ	94833	151K0021-50	. WIRE LEAD	1
	3	147	MOOZZ	94833	151K0021-50/3	. . WIRE, ELEC MAKE FROM M5086/2-18-9, 100 IN. LG	1
	3	148	XBOZZ	94833	151K0021-51	. WIRE LEAD	1
	3	150	MOOZZ	94833	151K0021-51/3	. . WIRE, ELEC MAKE FROM M5086/2-18-9, 96 IN. LG	1
	3	156	XBOZZ	94833	151K0021-52	. WIRE LEAD	1
	3	158	MOOZZ	94833	151K0021-52/17	. . WIRE, ELEC MAKE FROM M5086/2-10-9, 60 IN. LG	1
	3	159	XBOZZ	94833	151K0021-53	. WIRE LEAD	1
	3	161	MOOZZ	94833	151K0021-53/17	. . WIRE, ELEC MAKE FROM M5086/2-10-9, 60 IN. LG	1
	3	162	XBOZZ	94833	151K0021-54	. WIRE LEAD	1
	3	164	MOOZZ	94833	151K0021-54/17	. . WIRE, ELEC MAKE FROM M5086/2-10-9, 60 IN. LG	1
	3	165	XBOZZ	94833	151K0021-55	. WIRE LEAD	1
	3	167	MOOZZ	94833	151K0021-55/17	. . WIRE, ELEC MAKE FROM M5086/2-10-9, 60 IN. LG	1
	3	168	XBOZZ	94833	151K0021-56	. WIRE LEAD	1
	3	172	XBOZZ	94833	151K0021-56	. WIRE LEAD	1
	3	171	MOOZZ	94833	151K0021-56/17	. . WIRE, ELEC MAKE FROM M5086/2-10-9, 60 IN. LG	1
	3	162	MOOZZ	94833	151K0021-56/17	. . WIRE, ELEC MAKE FROM M5086/2-10-9, 24 IN. LG	1
	3	14	MOOZZ	94833	151K0021-6	. WIRE LEAD MAKE FROM M5086/2-14-9, 12 IN. LG	1
	3	15	XBOZZ	94833	151K0021-7	. WIRE LEAD	1
	3	17	MOOZZ	94833	151K0021-7/2	. . WIRE, ELEC MAKE FROM M5086/2-14-9, 12 IN. LG	1
	3	18	XBOZZ	94833	151K0021-8	. WIRE LEAD	1
	3	20	MOOZZ	94833	151K0021-8/2	. . WIRE, ELEC MAKE FROM M5086/2-14-9, 12 IN. LG	1

F10000RE NUMERICAL INDEX

PART NUMBER ORDER EFFECTIVE 12 July 1995

PLSN No.	Fig No.	Item No.	SMR Code	CAGE Code	Part Number	Description and Usable On Codes (UOC)	Qty
	4	49	MFFZZ	94833	151K0028	.GASKET,CONTROL BOX, TOP MAKE FROM ASTM D1056-2A2C2F2,1/8 X 1/2 X 19-3/4	1
	4	4	MFFZZ	94833	151K0030	.GASKET,CIRCUIT BREAKER PANEL MAKE FROM ASTM D1056-2A2C2F2,1/8 X 1/2 X 5-7/8	2
	4	5	MFFZZ	94833	151K0031	.GASKET,CIRCUIT BREAKER PANEL MAKE FROM ASTM D1056-2A2C2F2,1/8 X 3/4 X 3-1/4	2
	6	9	XBOZZ	94833	151K0032-1	BRACKET,MOTOR MOUNT	1
	6	25	XBOZZ	94833	151K0037	SHAFT,FAN DRIVE	1
	6	8	XBOZZ	94833	151K0038-1	BRACKET,ADJUSTING-MOTOR MOUNT	1
	11	34	XBFZZ	94833	151K0040-1	FRAME,CONDENSER	1
	4	47	XBOZZ	94833	151K0041-1	.RESET BUTTON	1
	3	151	XBOZZ	94833	151K0042-1	.RESISTOR ASSEMBLY	1
	3	154	MOOZZ	94833	151K0042-1/4	.. INSULATION,SLEEVING MAKE FROM M23053/5-102-0,1-1/2 IN.LG	2
	7	87	MFFZZ	94833	151K0043	TUBE,ACCUMULATOR TO REGULATOR 21.13 IN. LG MAKE FROM ASTM B280,1.125 OD X 0.050 WALL COPPER TUBING	1
	7	24	MFFZZ	94833	151K0044	TUBE,CONDENSER TO REGULATOR 11.00 IN. LG MAKE FROM ASTM B280,0.875 OD X 0.045 WALL COPPER TUBING	1
	7	41	MFFZZ	94833	151K0045	TUBE,STREET ELBOW TO ISOLATOR 32.40 IN. LG MAKE FROM ASTM B280,0.875 OD X 0.045 WALL COPPER TUBING	1
	7	15	XBFZZ	94833	151K0046-1	TUBE,RECEIVER INLET	1
	7	17	MFFZZ	94833	151K0046-1/T	.TUBE,COPPER 37.75 IN. LG MAKE FROM ASTM B280,0.625 OD X 0.035 WALL COPPER TUBING	1
	7	45	MFFZZ	94833	151K0047	TUBE,TEE TO HAND VALVE 8.32 IN. LG MAKE FROM ASTM B280,0.375 OD X 0.032 WALL COPPER TUBING	1
	7	48	XBFZZ	94833	151K0048-1	TUBE,HANDVALVE TO STRAINER	1
	7	50	MFFZZ	94833	151K0048-1/T	.TUBE,COPPER 8.63 IN. LG MAKE FROM ASTM B280,0.375 OD X 0.032 WALL COPPER TUBING	1
	7	65	XBFZZ	94833	151K0049-1	TUBE,SIGHT GLASS TO ELBOW	1
	7	67	MFFZZ	94833	151K0049-1/T	.TUBE,COPPER 18.47 IN. LG MAKE FROM ASTM B280,0.375 OD X 0.032 WALL COPPER TUBING	1
	7	51	XBFZZ	94833	151K0050-1	TUBE,STRAINER TO SOLENOID	1
	7	53	MFFZZ	94833	151K0050-1/T	.TUBE,COPPER 23.69 IN. LG MAKE FROM ASTM B280,0.375 OD X 0.032 WALL COPPER TUBING	1
	7	74	XBFZZ	94833	151K0051-1	TUBE,FILTER DRIER OUTLET	1
	7	76	MFFZZ	94833	151K0051-1/T	.TUBE,COPPER 14.72 IN. LG MAKE FROM ASTM B280,0.500 OD X 0.032 WALL COPPER TUBING	1
	7	11	XBFZZ	94833	151K0052-1	TUBE,RECEIVER TO FILTER DRIER	1
	7	13	MFFZZ	94833	151K0052-1/T	.TUBE,COPPER 18.69 IN. LG MAKE FROM ASTM B280,0.500 OD X 0.032 WALL COPPER TUBING	1
	7	57	PAFZZ	70255 94833 78462	200RB3F3 500K1869-1 B9F2	VALVE,SOLENOID(DEFROST & LIQUID LINE)	2

F10000RE NUMERICAL INDEX

PART NUMBER ORDER EFFECTIVE 12 July 1995

PLSN No.	Fig No.	Item No.	SMR Code	CAGE Code	Part Number	Description and Usable On Codes (UOC)	Qty
	8	31	PBFZZ	94833	500K1855-3	EVAPORATOR COIL	1
	4	38	PAOZZ	94833	500K1857-1C	.GAGE, COMPOUND	1
	4	39	PAOZZ	94833	500K1857-1P	.GAGE, PRESSURE	1
	6	5	PAOZZ	94833	500K1861	MOTOR, AC	1
	6	18	PAOZZ	94833	500K1866	BEARING, FLANGE	2
	5	20	PAOZZ	94833	500K1926-1	WASHER, FLAT	4
	4	22	PAOZZ	94833	500K1926-1	. WASHER, FLAT	10
	1	6	PAOZZ	94833	500K1926-2	WASHER, FLAT	28
	1	12	PAOZZ	94833	500K1926-3	WASHER, FLAT	28
	4	18	PAOZZ	94833	500K1926-3	. WASHER, FLAT	6
	5	6	PAOZZ	94833	500K1926-4	WASHER, FLAT	5
	6	4	PAOZZ	94833	500K1926-5	WASHER, FLAT	12
	7	20	PAFZZ	94833	500K1926-5	WASHER, FLAT	2
	6	17	PAOZZ	94833	500K1926-6	WASHER, FLAT	8
	5	18	PAOZZ	94833	500K1927-1	NUT, SELF LOCKING	4
	4	26	PAOZZ	94833	500K1927-1	. NUT, SELF LOCKING	29
	5	11	PAOZZ	94833	500K1927-2	. NUT, SELF LOCKING	4
	4	40	PAOZZ	94833	500K1927-2	. NUT, SELF LOCKING	6
	1	27	PAOZZ	94833	500K1927-3	NUT, SELF LOCKING	4
	2	1	PAOZZ	94833	500K1927-3	NUT, SELF LOCKING	7
	8	5	PAFZZ	94833	500K1927-3	NUT, SELF LOCKING	1
	11	22	PAOZZ	94833	500K1927-3	NUT, SELF LOCKING	1
	7	1	PAFZZ	94833	500K1927-3	NUT, SELF LOCKING	11
	11	16	PAOZZ	94833	500K1927-4	NUT, SELF LOCKING	34
	6	3	PAOZZ	94833	500K1927-5	NUT, SELF LOCKING	4
	7	19	PAFZZ	94833	500K1927-5	NUT, SELF LOCKING	2
	11	5	PAOZZ	94833	500K1927-6	NUT, SELF LOCKING	12
	7	25	PAFZZ	94833	500K1927-6	NUT, SELF LOCKING	9
	1	4	PAOZZ	94833	500K1928-13	BOLT, HEX HD	28
	2	6	PAOZZ	94833	500K1928-19	BOLT, HEX HD	2
	2	15	PAOZZ	94833	500K1928-19	. BOLT, HEX HD	2
	8	6	PAFZZ	94833	500K1928-19	BOLT, HEX HD	1
	9	1	PAFZZ	94833	500K1928-19	BOLT, HEX HD	6
	11	23	PAOZZ	94833	500K1928-19	BOLT, HEX HD	3
	7	2	PAFZZ	94833	500K1928-19	BOLT, HEX HD	10
	4	1	PAOZZ	94833	500K1928-19	. BOLT, HEX HD	7
	1	1	PAOZZ	94833	500K1928-21	BOLT, HEX HD	97
	2	2	PAOZZ	94833	500K1928-21	BOLT, HEX HD	8
	8	29	PAFZZ	94833	500K1928-21	BOLT, HEX HD	12
	7	40	PAFZZ	94833	500K1928-21	BOLT, HEX HD	5
	7	63	PAFZZ	94833	500K1928-24	BOLT, HEX HD	1
	5	4	PAOZZ	94833	500K1928-28	BOLT, HEX HD	5
	7	8	PAFZZ	94833	500K1928-28	BOLT, HEX HD	3
	6	10	PAOZZ	94833	500K1928-30	BOLT, HEX HD	6
	6	6	PAOZZ	94833	500K1928-44	BOLT, HEX HD	8
	7	21	PAFZZ	94833	500K1928-45	BOLT, HEX HD	2
	4	21	PAOZZ	94833	500K1928-5	. BOLT, HEX, HD	23
	6	23	PAOZZ	94833	500K1928-58	BOLT, HEX HD	4
	11	6	PAOZZ	94833	500K1928-58	BOLT, HEX HD	12
	7	26	PAFZZ	94833	500K1928-58	BOLT, HEX HD	8
	6	15	PAOZZ	94833	500K1928-59	BOLT, HEX HD	4
	5	19	PAOZZ	94833	500K1928-8	BOLT, HEX HD	4
	7	29	XBFZZ	94833	500K1948	. PLATE, WARNING	2
	4	8	PAOZZ	94833	500K1950-1	. WASHER, SPRING LOCK	10
	11	2	PAOZZ	94833	500K1950-10	WASHER, SPRING LOCK	4
	1	5	PAOZZ	94833	500K1950-2	WASHER, SPRING LOCK	28
	1	2	PAOZZ	94833	500K1950-3	WASHER, LOCK	91
	2	10	PAOZZ	94833	500K1950-3	WASHER, SPRING LOCK	1
	2	16	PAOZZ	94833	500K1950-3	. WASHER, SPRING LOCK	2
	8	30	PAFZZ	94833	500K1950-3	WASHER, SPRING LOCK	12

F10000RE NUMERICAL INDEX

PART NUMBER ORDER EFFECTIVE 12 July 1995

PLSN No.	Fig No.	Item No.	SMR Code	CAGE Code	Part Number	Description and Usable On Codes (UOC)	Qty
	9	4	PAFZZ	94833	500K1950-3	WASHER, SPRING LOCK	2
	11	25	PAOZZ	94833	500K1950-3	WASHER, SPRING LOCK	2
	7	9	PAFZZ	94833	500K1950-3	WASHER, SPRING LOCK	3
	7	89	PAFZZ	94833	500K1950-3	WASHER, SPRING LOCK	1
	4	2	PAOZZ	94833	500K1950-3	.WASHER, SPRING LOCK	8
	5	5	PAOZZ	94833	500K1950-4	WASHER, SPRING LOCK	5
	6	11	PAOZZ	94833	500K1950-4	WASHER, SPRING LOCK	6
	6	7	PAOZZ	94833	500K1950-5	WASHER, SPRING LOCK	8
	6	16	PAOZZ	94833	500K1950-6	WASHER, SPRING LOCK	8
	6	19	PAOZZ	94833	500K1956	PULLY, FAN DRIVE	1
	10	23	PAFZZ	14569	503-0346-01	.PLATE-TERMINAL GROUP	1
	10	38	PAFZZ	14569	503-0423-03	.PLATE-VALVE ASSEMBLY	1
	10	45	PAFZZ	14569	504-0217-00	.PISTON-PIN & ROD ASSY	2
	10	16	PAFZZ	14569	505-0173-09	.COVER-TERMINAL ASSY	1
	10	33	PAFZZ	14569	505-0360-00	.COVER-HOUSING BRG ASSEMBLY	1
	10	29	PAFZZ	14569	509-0034-10	.PUMP-OIL GROUP	1
	10	3	PAFZZ	14569	510-0068-00	.VALVE-SHUT OFF ASSY	1
	10	50	PAFZZ	14569	510-0142-00	.VALVE-OIL CHECK ASSY	1
	10	7	PAFZZ	14569	510-0238-01	.VALVE-SHUT OFF ASSY	1
	2	5	PAOZZ	78189	511-101800-00	NUT, SELF LOCKING, EXTERNAL TOOTH	2
				94833	52054-9		
	10	20	PAFZZ	14569	521-0018-00	.TERMINAL-FUSED CLUSTER	1
	10	46	PAFZZ	14569	570-0020-00	.GLASS-SIGHT GROUP	1
	7	84	PAFZZ	70510	1010FY	HOSE, ASSEMBLY METAL (SUCTION)	1
				94833	21058-7		
				60535	FMH-60-18		
	7	22	PAFZZ	97765	3391	RECEIVER	1
				94833	500K1850-3		
	7	42	PAFZZ	70510	3434FY	HOSE ASSEMBLY METAL (DISCHARGE)	1
				94833	21058-2		
				60535	FMH-60-14		
	7	88	PAFZZ	97765	3700	ACCUMULATOR	1
				94833	500K1856-4		
	9	7	MFFZZ	94833	12076-3-1000	.TUBING, COPPER STRAIGHT, FLARED MAKE FROM ASTM B280-.25 OD X .030 .WALL COPPER TUBING 1.00 IN. LG	2
	9	12	MFFZZ	94833	12076-3-1000	.TUBING, COPPER STRAIGHT, FLARED MAKE FROM ASTM B280-.25 OD X .030 .WALL COPPER TUBING 1.00 IN. LG	2
	7	28	PAFZZ	97403	13214E3789-2	.RIVET, BLIND	16
				07707	AD42H		
	3	48	PAOZZ	97403	13216E6191-1	.. TERMINAL, LUG	1
				00779	640903-1		
				59730	RA257		
	3	56	PAOZZ	97403	13216E6191-1	.. TERMINAL, LUG	1
				00779	640903-1		
				59730	RA257		
	3	59	PAOZZ	97403	13216E6191-1	.. TERMINAL, LUG	2
				00779	640903-1		
				59730	RA257		
	3	81	PAOZZ	97403	13216E6191-1	.. TERMINAL, LUG	1
				00779	640903-1		
				59730	RA257		
	3	85	PAOZZ	97403	13216E6191-1	.. TERMINAL, LUG	2
				00779	640903-1		
				59730	RA257		
	3	88	PAOZZ	97403	13216E6191-1	.. TERMINAL, LUG	2
				00779	640903-1		
				59730	RA257		

F10000RE NUMERICAL INDEX

PART NUMBER ORDER EFFECTIVE 12 July 1995

PLSN No.	Fig No.	Item No.	SMR Code	CAGE Code	Part Number	Description and Usable On Codes (UOC)	Qty
	3	91	PAOZZ	97403	13216E6191-1	.. TERMINAL, LUG	1
				00779	640903-1		
				59730	RA257		
	3	95	PAOZZ	97403	13216E6191-1	.. TERMINAL, LUG	1
				00779	640903-1		
				59730	RA257		
	3	99	PAOZZ	97403	13216E6191-1	.. TERMINAL, LUG	1
				00779	640903-1		
				59730	RA257		
	11	20	MFFZZ	97403	13218E0001-305	TUBING, PLASTIC 8.00 IN LG MAKE FROM ZZ-T-831, TYPE VI, CLASS 6 0.75 ID X 0.125 WALL	1
	4	24	PAOZZ	97403	13225E8194	. FASTON TAB ADAPTER	5
				00779	61045-1		
	7	64	XBFZZ	97403	13226E0881	SLEEVE, SPACER	1
	4	27	PAOZZ	74400	20007	. HOURMETER	1
				94833	500K1897		
	5	3	PAOZZ	14859	20640L15-496-	SWITCH, DEFROST TEMPERATURE	1
					Z10L45-2.0		
				94833	56031		
	7	14	PAFZZ	97765	27035	VALVE, ISOLATION	1
				94833	500K1885-2		
	7	18	PAFZZ	97765	27036	VALVE, ISOLATION	1
				94833	500K1885-3		
	5	1	PAOZZ	00779	42565-2	TAB, SINGLE CIRCUIT CONNECTOR	2
				19200	12712938-2		
	7	55	PAOZZ	00779	42565-2	TAB, SINGLE CIRCUIT CONNECTOR	4
				19200	12712938-2		
	7	77	PAFZZ	07295	50570	CAP AND CHAIN	2
				97403	13219E9540		
	11	17	PAOZZ	94833	53573-4-64	SCREW, CAP, HEX HEAD	30
	11	18	PAOZZ	94833	53573-4-68	SCREW, CAP, HEX HEAD	4
	11	1	PAOZZ	94833	53578-12	NUT, PLAIN HEX	4
	11	29	XBFZZ	94833	53581-8-24	. SCREW, WOOD, FLAT HEAD	42
	5	13	PAOZZ	21574	62104	. BLOCK, POWER DISTRIBUTION	1
				94833	500K2022		
	11	7	PAOZZ	94833	72948-1	MOUNT, UNIT	2
	11	8	PAOZZ	94833	72948-2	MOUNT, UNIT	2
	3	51	PAOZZ	16004	82898	.. TERMINAL, FEMALE	1
				1W564	B-972		
				FORD	SSD-437		
	3	146	PAOZZ	16004	82898	.. TERMINAL, FEMALE	1
				1W564	B-972		
				FORD	SSD-437		
	3	149	PAOZZ	16004	82898	.. TERMINAL, FEMALE	2
				1W564	B-972		
				FORD	SSD-437		
	5	2	PAOZZ	00779	480053-3	HOUSING, TAB	2
				19200	12712935		
	7	56	PAOZZ	00779	480053-3	HOUSING, TAB	4
				19200	12712935		
	7	33	PBFZZ	0A400	980095 3CZ0603B	CONDENSER, COIL	1
				94833	500K1849-2		
		10	PAOZZ	24624	5054519-7	. BUSHING, STRAIN RELIEF, CABLE	1
				59730	2535		
	5	9	PAOZZ	24624	5054519-9	. BUSHING, STRAIN RELIEF, CABLE	1
				59730	2535		
	10	55	PAFZZ	24624	5054519-9	BUSHING, STRAIN RELIEF, CABLE	1
				59730	2535		

F10000RE NUMERICAL INDEX

PART NUMBER ORDER EFFECTIVE 12 July 1995

PLSN No.	Fig No.	Item No.	SMR Code	CAGE Code	Part Number	Description and Usable On Codes (UOC)	Qty
	4	53	PAOZZ	57958 59730	5054519-9 2535	.BUSHING,STRAIN RELIEF,CABLE	3
	5	8	PAOZZ	24624 59730	5054520-3 142	.LOCKNUT, CONDUIT	2
	10	54	PAFZZ	24624 59730	5054520-3 142	LOCKNUT, CONDUIT	1
	4	52	PAOZZ	57958 59730	5054520-3 142	.LOCKNUT,CONDUIT	3
	3	23	PAOZZ	19200	12712936 00779 480054-3	..HOUSING,RECEPTACLE	3
	3	41	PAOZZ	19200	12712936 00779 480054-3	..HOUSING,RECEPTACLE	3
	3	64	PAOZZ	19200	12712936 00779 480054-3	..HOUSING,RECEPTACLE	1
	3	72	PAOZZ	19200	12712936 00779 480054-3	..HOUSING,RECEPTACLE	1
	3	107	PAOZZ	19200	12712936 00779 480054-3	..HOUSING,RECEPTACLE	1
	3	112	PAOZZ	19200	12712936 00779 480054-3	..HOUSING,RECEPTACLE	1
	3	127	PAOZZ	19200	12712936 00779 480054-3	..HOUSING,RECEPTACLE	1
	3	135	PAOZZ	19200	12712936 00779 480054-3	..HOUSING,RECEPTACLE	1
	3	22	PAOZZ	19200	12712937-1 00779 60414-1 00779 60249-2	..RECEPTACLE,SINGLE CIRCUIT CONNECTOR	3
	3	40	PAOZZ	19200	12712937-1 00779 60414-1 00779 60249-2	..RECEPTACLE,SINGLE CIRCUIT CONNECTOR	3
	3	63	PAOZZ	19200	12712937-2 00779 42282-2	..RECEPTACLE,SINGLE CIRCUIT CONNECTOR	1
	3	71	PAOZZ	19200	12712937-2 00779 42282-2	..RECEPTACLE,SINGLE CIRCUIT CONNECTOR	1
	3	106	PAOZZ	19200	12712937-2 00779 42282-2	..RECEPTACLE,SINGLE CIRCUIT CONNECTOR	1
	3	111	PAOZZ	19200	12712937-2 00779 42282-2	..RECEPTACLE,SINGLE CIRCUIT CONNECTOR	1
	3	126	PAOZZ	19200	12712937-2 00779 42282-2	..RECEPTACLE,SINGLE CIRCUIT CONNECTOR	1
	3	134	PAOZZ	19200	12712937-2 00779 42282-2	..RECEPTACLE,SINGLE CIRCUIT CONNECTOR	1
	9	15	PAFZZ	41947	A-127	TEE	2
	7	78	PAFZZ	41947 94833	A-330 51283-2	COUPLING,HALF UNION FLARE	2
	9	10	PAFZZ	41947 94833	A-340 53562-1	TEE,FLARE	1
	8	28	PAFZZ	41947 94833	A-4439 51323-14	COUPLING	1
	1	10	PAOZZ	81348	A-A-466/TYI- 2.5L-FZ	BOLT,BARREL	10
	4	32	PAOZZ	50831 94833	A19AAD-4000 500K1902	.THERMOSTAT,REMOTE BULB	1
	6	1	PAOZZ	71176 94833	A60 500K1952-26	V BELT,A-SECTION	1
	1	16	XBOZZ	07707	AD42H	RIVET,BLIND	4
	1	25	PAOZZ	07707 97403	AD44H 13214E3789-2	RIVET,BLIND	2
				97403	13214E3789-4		

F10000RE NUMERICAL INDEX

PART NUMBER ORDER EFFECTIVE 12 July 1995

PLSN No.	Fig No.	Item No.	SMR Code	CAGE Code	Part Number	Description and Usable On Codes (UOC)	Qty
	8	18	PAFZZ	70255	AFAE-1-MC-3/8 X 1/2 SAE	VALVE, EXPANSION	1
				94833	500K1870-2		
				78462	GFE-10-JC		
	4	9	PAOZZ	74193	AM3-A3-A-0035	.CIRCUIT BREAKER	1
				94833	500K1914-1		
	7	69	PAFZZ	70255	AMI-1MM3	INDICATOR, SIGHT	1
				94833	500K1852-2		
				78462	SA-13		
				30756	PSG-3MM		
	4	19	PAOZZ	27191	AN16DNOEB	.MOTOR STARTER	1
				94833	500K1898-1		
	4	37	PAOZZ	41947	AW4622	.COUPLING, FEMALE	2
				94833	51824-2		
	6	2	PAOZZ	71176	BK34	PULLEY, MOTOR DRIVE	1
				94833	500K1956		
	4	20	PAOZZ	27191	C25DND315B	.CONTACTOR	1
				94833	500K1909		
	5	23	PAOZZ	01963	E13-00M	SWITCH, PUSH	2
				94033	55230		
	7	7	PAFZZ	97765	FC6	STRAINER	1
				94833	500K1860-2		
	4	16	PAOZZ	27191	H2013A-3	.HEATER, THERMAL OVERLOAD	3
				94833	500K1899-1		
				01121	W60		
	8	8	PAFZZ	97765	H300	HEAT, EXCHANGER	1
				94833	500K1853-6		
	7	36	PAFZZ	70255	IPR-10-1 1/8	VALVE, PRESSURE REGULATOR	1
					ODF-65/122		
				94833	500K1871-2		
				78462	ORI-10-65/225-H-1 1/8 ODF		
	6	20	PAOZZ	71176	ITA44	.SHEAVE, TWO GROOVE	1
				94833	500K1955-1		
	6	14	PAOZZ	96906	MS20066-185	KEY, MACHINE-SQUARE	1
	6	22	PAOZZ	96906	MS20066-257	KEY, MACH.-SQUARE	1
	4	43	PAOZZ	96906	MS20659-130	. . TERMINAL, CRIMP STYLE	2
	11	24	PAOZZ	96906	MS21919WDG-10	CLAMP, LOOP TYPE, CUSHIONED	1
	7	5	PAFZZ	96906	MS21919WDG-14	CLAMP, LOOP TYPE, CUSHIONED	2
	2	12	PAOZZ	96906	MS21919WDG-17	CLAMP, LOOP TYPE, CUSHIONED	2
	7	34	PAFZZ	96906	MS21919WDG-30	CLAMP, LOOP-TYPE, CUSHIONED	1
	7	6	PAFZZ	96906	MS21919WDG-32	CLAMP, LOOP TYPE, CUSHIONED	1
	2	11	PAOZZ	96906	MS21919WDG-4	CLAMP, LOOP TYPE, CUSHIONED	3
	9	5	PAFZZ	96906	MS21919WDG-4	CLAMP, LOOP TYPE, CUSHIONED	2
	8	7	PAFZZ	96906	MS21919WDG-46	CLAMP, LOOP TYPE, CUSHIONED	1
	7	3	PAFZZ	96906	MS21919WDG-46	CLAMP, LOOP TYPE, CUSHIONED	2
	2	3	PAOZZ	96906	MS21919WDG-6	CLAMP, LOOP TYPE, CUSHIONED	3
	7	62	PAFZZ	96906	MS21919WDG-6	CLAMP, LOOP TYPE, CUSHIONED	1
	2	4	PAOZZ	96906	MS21919WDG-8	CLAMP, LOOP TYPE, CUSHIONED	1
	4	28	PAOZZ	96906	MS24523	. SWITCH, TOGGLE	1
	5	14	PAOZZ	96906	MS24662-5	. RIVET	8
	4	55	PAOZZ	96906	MS24662-5	. RIVET	2
	4	48	PAOZZ	96906	MS24693-S28	. SCREW, MACH-CSKH	4
	4	14	PAOZZ	96906	MS24693-S30	. SCREW, MACH-CSKH	6
	5	12	PAOZZ	96906	MS24693-S47	. SCREW, MACH-CSKH	4
	4	41	PAOZZ	96906	MS24693-S53	. SCREW, MACH-CSKH	2
	2	13	PAOZZ	96906	MS24693-S72	SCREW, MACH-CSKH	8
	3	31	PAOZZ	96906	MS25036-102	. . TERMINAL, LUG	1
	3	34	PAOZZ	96906	MS25036-102	. . TERMINAL, LUG	1
	3	37	PAOZZ	96906	MS25036-102	. . TERMINAL, LUG	1

F10000RE NUMERICAL INDEX

PART NUMBER ORDER EFFECTIVE 12 July 1995

PLSN No.	Fig No.	Item No.	SMR Code	CAGE Code	Part Number	Description and Usable On Codes (UOC)	Qty
	3	45	PAOZZ	96906	MS25036-102	.. TERMINAL, LUG	1
	3	55	PAOZZ	96906	MS25036-102	.. TERMINAL, LUG	1
	3	67	PAOZZ	96906	MS25036-102	.. TERMINAL, LUG	1
	3	75	PAOZZ	96906	MS25036-102	.. TERMINAL, LUG	1
	3	78	PAOZZ	96906	MS25036-102	.. TERMINAL, LUG	1
	3	82	PAOZZ	96906	MS25036-102	.. TERMINAL, LUG	1
	3	103	PAOZZ	96906	MS25036-102	.. TERMINAL, LUG	2
	3	108	PAOZZ	96906	MS25036-102	.. TERMINAL, LUG	1
	3	113	PAOZZ	96906	MS25036-102	.. TERMINAL, LUG	1
	3	116	PAOZZ	96906	MS25036-102	.. TERMINAL, LUG	2
	3	119	PAOZZ	96906	MS25036-102	.. TERMINAL, LUG	2
	3	122	PAOZZ	96906	MS25036-102	.. TERMINAL, LUG	1
	3	128	PAOZZ	96906	MS25036-102	.. TERMINAL, LUG	1
	3	131	PAOZZ	96906	MS25036-102	.. TERMINAL, LUG	1
	3	136	PAOZZ	96906	MS25036-102	.. TERMINAL, LUG	1
	3	139	PAOZZ	96906	MS25036-102	.. TERMINAL, LUG	1
	3	169	PAOZZ	96906	MS25036-102	.. TERMINAL, LUG	1
	3	161	PAOZZ	96906	MS25036-102	.. TERMINAL, LUG	1
	3	27	PAOZZ	96906	MS25036-103	.. TERMINAL, LUG	1
	3	92	PAOZZ	96906	MS25036-103	.. TERMINAL, LUG	1
	3	96	PAOZZ	96906	MS25036-103	.. TERMINAL, LUG	1
	3	100	PAOZZ	96906	MS25036-103	.. TERMINAL, LUG	1
	3	123	PAOZZ	96906	MS25036-103	.. TERMINAL, LUG	1
	3	42	PAOZZ	96906	MS25036-108	.. TERMINAL, LUG	2
	3	4	PAOZZ	96906	MS25036-112	.. TERMINAL, LUG	1
	3	7	PAOZZ	96906	MS25036-112	.. TERMINAL, LUG	1
	3	10	PAOZZ	96906	MS25036-112	.. TERMINAL, LUG	1
	3	24	PAOZZ	96906	MS25036-112	.. TERMINAL, LUG	2
	3	52	PAOZZ	96906	MS25036-112	.. TERMINAL, LUG	1
	3	142	PAOZZ	96906	MS25036-112	.. TERMINAL, LUG	2
	3	157	PAOZZ	96906	MS25036-112	.. TERMINAL, LUG	1
	3	160	PAOZZ	96906	MS25036-112	.. TERMINAL, LUG	1
	3	163	PAOZZ	96906	MS25036-112	.. TERMINAL, LUG	1
	3	166	PAOZZ	96906	MS25036-112	.. TERMINAL, LUG	1
	3	170	PAOZZ	96906	MS25036-112	.. TERMINAL, LUG	1
	3	153	PAOZZ	96906	MS25036-148	.. TERMINAL, LUG	1
	3	62	PAOZZ	96906	MS25036-149	.. TERMINAL, LUG	1
	3	70	PAOZZ	96906	MS25036-149	.. TERMINAL, LUG	1
	3	145	PAOZZ	96906	MS25036-149	.. TERMINAL, LUG	1
	3	152	PAOZZ	96906	MS25036-149	.. TERMINAL, LUG	1
	3	16	PAOZZ	96906	MS25036-153	.. TERMINAL, LUG	1
	3	19	PAOZZ	96906	MS25036-153	.. TERMINAL, LUG	1
	3	162	PAOZZ	96906	MS25036-157	.. TERMINAL, LUG	1
	4	34	PAOZZ	96906	MS25043-24DA	.. COVER, ELECTRICAL CONNECTOR	1
	7	31	PAFZZ	96906	MS27130-S133K	.. NUT, PLAIN, BLIND RIVET	6
	2	17	PAOZZ	96906	MS27130-S19	.. NUT, BLIND-FLAT HEAD	2
	4	3	PAOZZ	96906	MS27130-S19	.. NUT, BLIND-FLAT HEAD	2
	4	58	PAOZZ	96906	MS27130-S19	.. NUT, BLIND-FLAT HEAD	6
	7	32	PAFZZ	96906	MS27130-S20K	.. NUT, PLAIN, BLIND RIVET	1
	4	36	PAOZZ	96906	MS27211-2	.. THERMOMETER	1
	3	1	PAOZZ	96906	MS3367-2-9	.. STRAP, TIE DOWN	10
	3	2	PAOZZ	96906	MS3367-4-9	.. STRAP, TIE DOWN	10
	4	7	PAOZZ	96906	MS35206-227	.. SCREW, MACH PAN HD	6
	4	17	PAOZZ	96906	MS35206-263	.. SCREW, MACH-PAN HD	1
	7	54	PAFZZ	96906	MS35489-118	GROMMET, RUBBER	2
	4	31	PAOZZ	96906	MS35489-118	.. GROMMET, RUBBER	1
	5	24	PAOZZ	96906	MS35489-123	GROMMET, RUBBER	1
	7	68	PAFZZ	96906	MS35489-14	GROMMET, RUBBER	1
	2	9	PAOZZ	96906	MS35489-15	GROMMET, RUBBER	2
	4	54	PAOZZ	96906	MS35489-2	.. GROMMET, RUBBER	1



F10000RE NUMERICAL INDEX

PART NUMBER ORDER EFFECTIVE 12 July 1995

PLSN No.	Fig No.	Item No.	SMR Code	CAGE Code	Part Number	Description and Usable On Codes (UOC)	Qty
	8	1	PAFZZ	96906	MS35489-25	GROMMET,RUBBER	1
	11	21	PAOZZ	96906	MS35489-28	GROMMET,RUBBER	1
	2	8	PAOZZ	96906	MS35489-36	GROMMET,RUBBER	1
	11	19	PAOZZ	96906	MS35842-11	CLAMP,HOSE	1
	7	4	PAFZZ	96906	MS35845-3	DEHYDRATOR	1
				94833	500K1851-3		
	8	10	PAFZZ	96906	MS35872-2	.NUT,FLARE	1
	9	8	PAFZZ	96833	MS35872-2	.NUT,FLARE	2
	9	13	PAFZZ	96833	MS35872-2	.NUT,FLARE	2
	8	13	PAFZZ	96906	MS35872-3	.NUT,FLARE	1
	7	49	PAFZZ	96906	MS35872-3	.NUT,FLARE	1
	7	52	PAFZZ	96906	MS35872-3	.NUT,FLARE	2
	7	60	PAFZZ	96906	MS35872-3	NUT,FLARE	4
	7	66	PAFZZ	96906	MS35872-3	.NUT,FLARE	1
	8	20	PAFZZ	96906	MS35872-4	.NUT,FLARE	1
	7	12	PAFZZ	96906	MS35872-4	.NUT,FLARE	2
	7	75	PAFZZ	96906	MS35872-4	.NUT,FLARE	1
	7	16	PAFZZ	96906	MS35872-5	.NUT,FLARE	1
	7	46	PAFZZ	96906	MS35880-2	VALVE,PACKLESS,STOP	2
	8	16	PAFZZ	96906	MS35917-9	ELBOW,TUBE,90 DEGREE	1
	7	81	PAFZZ	96906	MS35920-17	REDUCER,COUPLING	1
	7	73	PAFZZ	96906	MS35923-3	REDUCER,COUPLING	1
	7	61	PAFZZ	96906	MS35923-4	REDUCER,COUPLING	1
	8	26	PAFZZ	96906	MS35923-5	REDUCER,COUPLING	1
	8	24	PAFZZ	96906	MS35928-4	ELBOW,STREET,90 DEGREE	1
	7	44	PAFZZ	96906	MS35928-7U	ELBOW,STREET,45 DEGREE	1
	11	9	PAOZZ	96906	MS51850-54	SCREW,TAPPING	84
	1	9	PAOZZ	96906	MS51850-74	SCREW,TAPPING--THREAD FORMING,HEX HD	8
	4	13	PAOZZ	71400	MTH-6AMP	.FUSE	2
				94833	55120-3		
	4	59	PAOZZ	80205	NAS1329S06KB75	.NUT,BLIND RIVET	6
	7	86	PAFZZ	70255	OPR-10-1 1/8	VALVE,PRESSURE REGULATOR	1
					ODF-0-60		
				94833	500K1854-2		
				78462	CRC0-010-0/60-1		
					1/8		
	6	21	PAOZZ	71176	P1	.BUSHING,SPLIT TAPER	1
				94833	500K1955-2		
	9	2	PAFZZ	50831	P45NCA-12	SWITCH,DIFFERENTIAL OIL PRESSURE	1
				94833	500K1907		
	9	3	PAFZZ	50831	P70MA-1G	SWITCH,DUAL PRESSURE CONTROL	1
				94833	500K1901		
	4	30	PAOZZ	1HM04	QC-11	.SOCKET,RELAY MOUNT	1
				94833	500K1912		
	4	15	PAOZZ	71400	S-8301-2	.FUSE BLOCK	1
				94833	500K1996		
	6	24	PAOZZ	22038	SNL1821-3,I-CCW	FAN,EVAPORATOR	1
				94833	500K1865-3		
				35197	T10S08A-1830-		
					1/2-CW-DIS		
	6	13	PAOZZ	22038	SNL2421-4,I-CW	FAN,CONDENSER	1
				94833	500K1864-2		
				35197	F10H082420-5/8-		
					CCW-DIS		
	4	29	PAOZZ	1HM04	TDF-220-AKB-24H	.TIMER,REPEAT CYCLE	1
				94833	500K1905-1		
	4	25	PAOZZ	28478	TYPE 265FB	.RELAY,CONTROL	2
				94833	500K1904-1		
	3	155	PAOZZ	12697	VC10F-5K	.RESISTOR,10W	1
				94833	500K1998		

F10000RE NUMERICAL INDEX

PART NUMBER ORDER EFFECTIVE 12 July 1995

PLSN No.	Fig No.	Item No.	SMR Code	CAGE Code	Part Number	Description and Usable On Codes (UOC)	Qty
	7	35	PAFZZ	41947	W-1737	BUSHING, FLUSH	2
				97403	13211E3799-14		
	8	3	PAFZZ	41847	W-2009	ELBOW, TUBE	1
				97403	13216E6190-2		
	7	23	PAFZZ	41947	W-2022	ELBOW, TUBE	1
				97403	13216E6190-4		
	7	39	PAFZZ	41947	W-2334	ELBOW, TUBE	2
				97403	13216E6176-6		
	8	17	PAFZZ	41947	W-2344	ELBOW, ST. 90 DEGREES	1
				94833	50981-6		
	7	82	PAFZZ	41947	W-2344	ELBOW, ST. 90 DEGREES	3
				94833	50981-6		
	8	25	PAFZZ	41047	W-4015	TEE	1
				97403	13211E4043-29		
	7	38	PAFZZ	41947	W-4035	TEE	1
				97403	13211E4043-44		